

WINTER 2020

# Ashfield

MATTERS

## INCLUDING

Covid Memorial Consultation

Welfare Support Fund Update



**INSIDE:**  
MILL WATERS PHOTO  
COMPETITION WINNERS!

# Improved Kirkby play areas



**FREE  
TOWN  
CENTRE  
PARKING**

**IN ASHFIELD  
DISTRICT COUNCIL  
OWNED CAR PARKS**

An investment of over **£100k** includes an interactive outdoor gym

# 24 hour Emergency help, at the touch of a button

## Your local Lifeline provider with over 25 years' experience

Do you know someone  
with a vulnerability or  
illness that leaves them  
feeling insecure?

Our Lifeline service  
provides personal  
support and reassurance  
to enable people to stay  
independent at home.

- Dependable
- Easy to use
- Straight through  
to operator
- 24 hour service
- Free repair and  
replacement service



### For more information:

- Call 01623 608888
- Email [first4support@ashfield.gov.uk](mailto:first4support@ashfield.gov.uk)
- Visit our website at: [www.ashfield.gov.uk/lifeline](http://www.ashfield.gov.uk/lifeline)

Online application form available at:  
[www.ashfield.gov.uk/lifeline-application](http://www.ashfield.gov.uk/lifeline-application)

FROM ONLY **£3.85**  
PER WEEK

## DID YOU KNOW?

Ashfield District Council offers motorists a cost effective,  
reliable, trustworthy and independent MOT testing service



FROM ONLY  
**£40**

Our MOT station is open Monday to Thursday from 8am with last test at 3pm and Fridays  
from 8am with last test at 2pm. New COVID-19 procedures will be explained when booking.

For more information or to book an MOT please telephone 01623 457885 / 457889.



Cllr Helen-Ann Smith, Deputy Leader of the Council

# Welcome...

## to our new edition of Ashfield Matters

**Welcome to the latest edition of Ashfield Matters – your guide to what the Council is doing across the District.**

As these uncertain times continue I want to thank all residents for following government guidance and supporting our communities. Plans for a key worker memorial are underway, and we'd like to hear your ideas and feedback on what the memorial should look like. More details can be found later in the magazine.

Earlier in the month Remembrance Day events were held on a much smaller scale than usual, but along with the Council's virtual events residents were still able to remember those that sacrificed their lives from our own homes. Christmas is just around the corner, and although we can't hold our Christmas festivals this year the town centres will still be lit up for residents to enjoy. Our feature lights will be back, and following the success of last year's selfie competition we'll be holding another this year. Keep a look out for details on our social media pages.

**We'll once again be bringing free weekend car parking to the town centres during December. With a huge number of independent retailers our town centres are the perfect place to shop for Christmas gifts.**

We are also excited to announce plans to build 32 new Council houses across the District. The need for social housing has never been higher and we hope to start work on the sites in the new year. Our parks & green spaces also continue to see improvement works. The new miners statues at Brierley Forest park will be in place soon, Annesley Recreation ground has seen a huge investment and next year a number of Sutton parks will benefit from funding.

I hope you enjoy this issue and don't forget to let me know if you have any comments you'd like to make.

**Cllr Helen-Ann Smith,**  
Deputy Leader, Ashfield District Council



## All about us

Ashfield Matters is produced by Ashfield District Council's Communications Team.

The magazine is delivered to every household in the District.

Katherine Green, **01623 457307**  
**corpcomms@ashfield.gov.uk**

If you require assistance with this document or would like it in a different format, please contact Customer Services on  
**01623 450000**

## Contact us

You can contact Ashfield District Council in a number of ways:

Web: **www.ashfield.gov.uk**  
Tel: **01623 450000**  
Fax: **01623 457585**  
Email: **info@ashfield.gov.uk**  
Typetalk: **18001**  
**01623 450000**

## Making a payment

Did you know you can make payments for a range of the Council's services using our online payment service – have a look on our website  
**www.ashfield.gov.uk/pay**

Alternatively, you can call our 24 hour payment line on **08453 726173**



**www.facebook.com/ADCAshfield**



**www.twitter.com/ADCAshfield**

SUTTON IN ASHFIELD

# John Eastwood Hospice Shop

The new John Eastwood Hospice shop, on Portland Square, Sutton, was officially opened in September.



John Eastwood Hospice, based in Sutton, believe in providing specialist palliative care in a warm and comforting environment both at the hospice and in the community.

The Hospice Trust are approaching the 30th anniversary of when they first opened their doors.



Council Leader, Cllr Jason Zadrozny; Chairman of Ashfield District Council, Cllr Andy Meakin; Cllr Samantha Deakin Sharon Williams, CEO of John Eastwood Hospice Trust; and Jill Johnson, Shop Manager.

KIRKBY IN ASHFIELD



Cllr Andy Meakin at the Flag Raising at the Kirkby Council Offices

## Merchant Navy Day

Ashfield District Council celebrated Merchant Navy Day by raising the Red Ensign and providing a service at the Kirkby Council offices on 3rd September 2020.

Merchant Navy Day remembers and commemorates the service that the men and women of the Merchant Navy and Fishing Fleets have done over the years, both during conflict and peace.





# Golden Litter Picker for Young Volunteer

HUTHWAITE

**A young volunteer from Huthwaite has been rewarded for her fantastic work in the community.**

Carly was recently visited by Huthwaite and Brierley Ward Councillor and Deputy Leader Tom Hollis, who thanked her for her efforts to keep Ashfield clean.

*A big fan of skateboarding, Carly had noticed litter in her local park where she practises, mostly caused by older children. Carly took it upon herself to grab a bag and clear the area herself.*

To thank her for her efforts, Councillor Tom Hollis recently paid Carly a visit at Brierley Forest Park. She was presented with a Litter Hero Award, a prestigious golden litter picker and some chocolates.



Cllr Tom Hollis, Carly and George Ward, ADC Service Performance Officer

HUCKNALL

## Hucknall Resident turns 100

A birthday card from the Queen was waiting for Hucknall resident Hilda (Tilly) Tilcock, a lifelong resident of Hucknall, on reaching the special age of 100 in September.

Vice Chairman of Ashfield District Council, Cllr Arnie Hankin and local District Councillor for Hucknall, Cllr John Wilmott, both presented her with a bunch of flowers and a card at her party at the George Street Club.



Cllr Arnie Hankin, Hilda Tilcock and Cllr John Wilmott

# Taskforce to tackle at Portland Square

**The Council's Community Safety Team is taking a zero tolerance approach to Anti-Social Behaviour in Sutton Town Centre.**

The Council has set up the multi-agency taskforce as a response to the ongoing Anti-Social Behaviour in the town centre and Portland Square area which has been causing a nuisance to local shoppers, residents and traders. The Council will be working closely with Nottinghamshire Police, Housing Options and Framework to tackle all aspects of the issues.

Community Protection Officers have already completed a large number of confiscations of alcohol, issued Fixed Penalty Notices and obtained injunctions against repeat offenders.

*The taskforce is also providing support to the more vulnerable residents. This follows the work that the CPOs, Complex Case Team and Housing Options have already been carrying out, engaging with homeless residents to provide support to help them access our services.*



## KIRKBY IN ASHFIELD

### Community Protection Officers Steak Out



**Community Protection Officers recently received intelligence that two people had stolen meat from the Co-op in Kirkby.**

Council CPOs spotted the suspects, following an area search, and monitored their activity whilst they informed the police of their whereabouts.

This led to the pair being arrested by the police.



Community Protection Officer and Cllr Samantha Deakin

ASB

“Community Protection Officers have already completed a large number of confiscations of alcohol, issued Fixed Penalty Notices and obtained injunctions against repeat offenders.”



Cllr Samantha Deakin & Community Protection Officers

SUTTON IN ASHFIELD

## Residents convicted for failing to comply with Community Protection Notice

**Two Ashfield residents have been convicted for failing to comply with a Community Protection Notice as they failed to dispose of excess waste in their garden.**

The Anti-Social Behaviour team had visited the property on a number of occasions following reports of a large amount of waste attracting rats and undesirable smells. Failure to remove the waste resulted in them being served a Community



Waste at the property

Protection Notice, under the Anti-Social Behaviour, Crime and Policing Act 2014.

Having ignored the Notice and failing to remove the waste the Council pursued Court Action.

***Nottingham Magistrates imposed a fine of £440 each, a victim surcharge of £34 each, £250 court costs and ordered the defendants to remove all waste within 28 days.***



The team at Ashfield District Council created a 'Thank you' area opposite Kings Mill Hospital to recognise NHS workers.



# Covid Memorial Consultation

*Every Thursday evening during the COVID lockdown, Ashfield's streets were packed with people clapping for key workers.*

Their contribution during the pandemic has been immense. In the spirit of this, the Council's COVID-19 Response and Recovery Scrutiny Panel are launching a consultation for a COVID-19 People's Memorial.







ASHFIELD  
COVID UPDATE

## Covid-19 Support

If you are staying at home because you or someone in your house has coronavirus symptoms and need urgent help, call **0300 500 8080** between 8am to 6pm Monday to Friday for guidance and support.

Get more advice and help through the Nottinghamshire County Council Coronavirus Community Support Hub at [www.nottinghamshire.gov.uk](http://www.nottinghamshire.gov.uk)



# ASHFIELD

The panel feel strongly that there should be a lasting memorial to key workers who put their lives at risk. What form this will take is up to you. Where it will be is up to you.

We want future generations of people in Ashfield to remember the great sacrifices that key workers made during the pandemic.

It will be the Council's way of recognising all NHS staff, care

home workers, the emergency services, teaching staff, volunteers and all key workers that did the District proud.

The panel want a People's Memorial that reflects public opinion. Something that will not only remember those who lost their lives but those who saved us.



“ We want future generations of people in Ashfield to remember the great sacrifices that key workers made during the pandemic. ”



If you would like to contribute to this consultation then please email:

▶ [covidmemorial@ashfield.gov.uk](mailto:covidmemorial@ashfield.gov.uk) -  
or go to [www.ashfield.gov.uk/covidmemorial](http://www.ashfield.gov.uk/covidmemorial)



NHS

## We must keep on protecting each other.



HANDS



FACE



SPACE

STAY ALERT • CONTROL THE VIRUS • SAVE LIVES

# Housing Strategy Action Plan Achievements

In 2018-20

56

new affordable homes were delivered in Ashfield



The Council acquired

9

new social rent homes at the former Rolls Royce factory site in Hucknall

Enforcement action was taken at

37

properties in 2018-20 in Selective Licensing areas



In 2018-20 the Domestic Abuse caseworker supported

200

residents

27

properties have been purchased and are managed directly by the Council

570

Selective Licenses are in place and enforcement action is being taken against those landlords who have failed to obtain a licence.



12

new Selective Licenses were issued in 2018-20 and 26 applications to vary an existing licence were processed.

6

civil penalties have been issued in 2018-20 through our Private Sector Enforcement team.





Cllr Tom Hollis and an ADC Gas Engineer carry out a property health & safety check.

## DID YOU KNOW...?

We completed over

**4,350 repairs**



and gas services during lockdown

**9,604**



property health & safety checks were completed on the first visit

# Welfare Support Fund

***The Property Health & Safety Check Programme (gas and electrical servicing) has raised £4,802 in partnership with J Tomlinson Ltd through its first time access contribution scheme.***

The first time access contribution scheme donates 50p for each time a Property Health and Safety Check is completed on the first visit.

Over £1,000 of this fund has been used by the Housing Management and Tenancy Services Teams over the last 12 months. Fourteen of our most vulnerable tenants have been supported to move or remain in one of the Council's properties.

The Welfare Support Fund has also been used by the Tenancy Sustainment Team to support tenants to buy essential goods. Enabling them to settle in their home and to support them in sustaining their tenancy.

“ Over £1,000 of this fund has been used by the Housing Management and Tenancy Services Teams over the last 12 months to support 14 of our most vulnerable tenants ”





**Cllr Tom Hollis & Paul Parkinson, Director of Housing & Assets at Maun Valley, Sutton**



**Garage site at Chestnut Grove, Hucknall**

# New Council Houses given green light

***Plans have now been given the green light to build new council houses in Hucknall and Sutton.***

The plans will see a total of 32 new homes built across the District, providing much needed council housing.

***In Hucknall garage sites across the town would be utilised. Sites at Barbara Square, Hawthorne Avenue, Chestnut Grove and Chatsworth Drive are currently underused with a handful of garages across the sites occupied. The sites would be developed to build a mixture of two, three and four bed homes.***

In Sutton the Maun Valley site, located off Leander Close would see 17 council

houses built. The plans include two bed bungalows, two & three bed houses and maisonettes.

In the current climate the demand for social housing is increasing, with family homes rarely becoming available we want to ensure that we can offer affordable housing to as many people on the housing register as possible

The proposed plans will be dependent on funding being agreed from Homes England. If successful its hoped works would start in early 2021.

“ In the current climate the demand for social housing is increasing, with family homes rarely becoming available...” ”

Cllr Jason Zadrozny & Cllr Samantha Deakin at Sutton War Memorial

Cllr Jason Zadrozny

Residents displayed poppies in their homes

# Remembrance Day

***The pandemic impacted on this year's Remembrance Services, but events held across the District ensured that those who made the ultimate sacrifice and lost their lives in active service were remembered across Ashfield.***

The usual parades and church services were unable to take place. Small wreath laying events were held, with the Kirkby and Sutton events being live streamed on the internet.

Poppy lights were installed across the District in October and remained lit until the week after Remembrance Sunday.

Residents took part in the two minutes silence on their doorsteps, pictures of poppies were displayed in windows and commemorations were held virtually on the Council's website.

On Armistice Day a small wreath laying event was held at the Council's Urban Road offices to commemorate the eleventh hour of the eleventh day of the eleventh month, when in 1918 WW1 ended.

## ***War Memorial Restoration***

Over the next five years restoration work will continue on the District's ten war memorials.

Working with the War Memorials Trust, a five year maintenance programme has been agreed that will enable our war memorials to be preserved for many years to come. The rolling five year plan will see Sutton Cemetery and Kingsway Memorials professionally cleaned this year.

**In recent years the Council has spent over £20,000 on repairs and restoration of the memorials including specialist cleaning.**

REMEMBRANCE  
SUNDAY 2020

**SUNDAY 8 NOVEMBER**



Poppy wreath laid at Urban Road offices

“Poppy lights were installed across the District in October and remained lit until the weeks after Remembrance Sunday.”

# SHOP LOCAL CHRIST

**This Christmas, we continue to support local businesses and encourage all residents to Love Ashfield, Shop Local.**

With over 200 small businesses across the District, Ashfield is open for business and waiting to welcome you back to safely shop! Show your support to the local community and shop local for a special gift this December.

- ✓ More money put back into the local economy
- ✓ Personal, friendly, customer service to remember
- ✓ Supporting local jobs

Cllr Samantha Deakin,  
Susan Robertson and  
Cllr Jason Zadrozny at  
Geoff Webster's Bakery



## **P** Free Parking!

We now have two hours free parking in all our town centres, and throughout December we'll once again be offering free weekend parking on our town centre car parks!

### **Idlewells Market**

With a variety of traders all in one place, why not try Idlewells Market this December?

Conveniently located in the Idlewells Shopping Centre in Sutton town centre, the market has everything you will need including crafts, clothing, food, books, cards, gifts and accessories!

Charlie the  
Polar Bear



# THIS MAS



Hucknall  
Christmas lights



Sutton's Christmas Tree



## CHRISTMAS COMES TO ASHFIELD

**Despite the pandemic, we're pleased to announce that Christmas IS coming to Ashfield this year!**

Although we're unable to hold our Christmas festivals, the magic will still be in our town centres with Christmas lights, trees and feature lighting.

Following on from the success of last year, Charlie the Polar Bear and the Giant Snowman will be back and this year will be joined by Mummy Penguin and her baby!

Charlie the Polar Bear will be in Hucknall, Giant Snowman in Sutton and Mummy & baby Penguin in Kirkby. Keep a look out on our social media pages for our selfie competition.

We'll also be holding a number of virtual events and activities across our social media. Follow us at Ashfield District Council on Facebook and [adcashfield](#) on Twitter.

# Mill Waters Photo Competition Winners

*The winners of the first Mill Waters Photography competition have been announced.*

The competition was the first run by Mill Waters with Ashfield District Council. The photographs had to fit into either Flora or Fauna categories, and they had to be taken across any of the three Mill Waters sites; Sutton Lawn, Kings Mill Reservoir and Hermitage Ponds.

*The winners of each category received a £50 high street shopping voucher, with the two winners of Highly Commended receiving a £25 voucher.*

The competition follows the recent improvements across King's Mill Reservoir, The Lawn and Hermitage Ponds after Ashfield District Council secured funding from The National Lottery Heritage Fund. The works included restoration of the viaduct, improvements to the heritage centre and café, and dredging of Kings Mill Reservoir.



FLORA CATEGORY

**WINNER**  
Amy Wilson



## THE WINNERS OF EACH CATEGORY ARE:

### FLORA CATEGORY

**Winner** - Amy Wilson

**Highly Commended** - Paula Burton

### FAUNA

**Winner** - Bob Cotton

**Fauna Highly Commended** - Sydney Greig





FAUNA CATEGORY

**WINNER**

Bob Cotton



There were 50 photographs entered into the competition, with entries ranging from action shots to detailed images of plants.



FLORA CATEGORY

**HIGHLY COMMENDED**

Paula Burton



FAUNA CATEGORY

**HIGHLY COMMENDED**

Sydney Greig

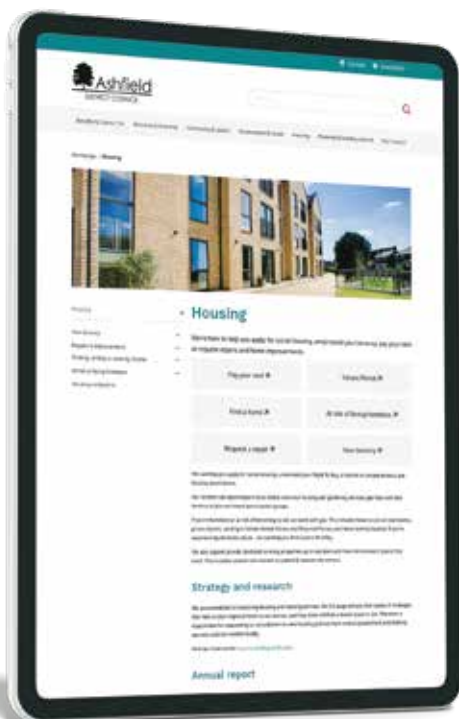
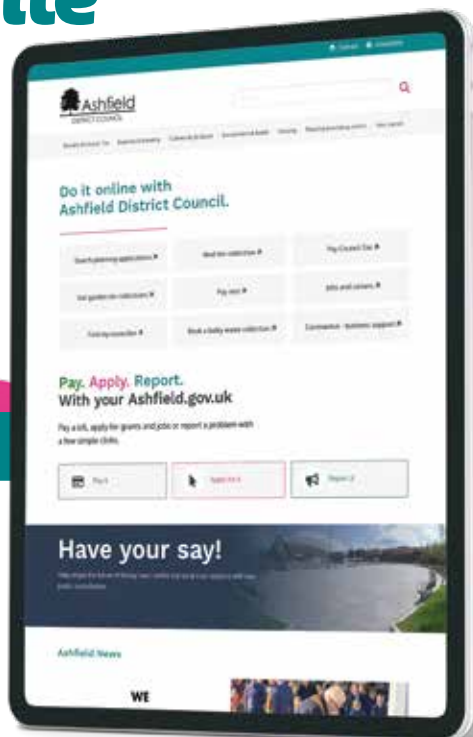
**Mill Waters**  
Parks and Reservoir



# The new Ashfield District Council website is now live!

*It's now easier than ever to report, apply and pay online.*

Our new look website provides residents with a fresh, clean, modern site that is simple to navigate and allows easy access to our services digitally. In fact Ashfield District Council is one of the only UK Councils to have a ShawTrust approved website for accessibility.



## Follow us on social media!

*You can also keep up to date with all things Ashfield District Council on our social media channels.*

Follow us for news updates, job adverts, events, competitions, meetings and more! Our direct messaging inbox is open to for all your enquiries.



# Useful contact details...

*Our offices at Urban Road (Kirkby), Brook Street (Sutton) and Watnall Road (Hucknall) are now open on an appointment only basis.*

If you cannot resolve your query or access a service online or over the telephone. Appointments are needed to limit the number of customers at a time to comply with COVID-safe requirements.



**ADC Switchboard**  
t: 01623 450000



**Democratic Services**  
e: [democratic.services@ashfield.gov.uk](mailto:democratic.services@ashfield.gov.uk)  
t: 01623 457232



**Duty Planner**  
e: [dutyplanner@ashfield.gov.uk](mailto:dutyplanner@ashfield.gov.uk)  
t: 01623 457381



**Elections**  
e: [regelec@ashfield.gov.uk](mailto:regelec@ashfield.gov.uk)



**Environment and Waste**  
e: [environment@ashfield.gov.uk](mailto:environment@ashfield.gov.uk)  
t: 0800 183 8484



**Cemeteries**  
e: [cemeteries@ashfield.gov.uk](mailto:cemeteries@ashfield.gov.uk)  
t: 01623 457462



**Anti-Social Behaviour**  
e: [asb@ashfield.gov.uk](mailto:asb@ashfield.gov.uk)  
t: 01623 450000



**Lost/Stray Dogs**  
t: 01623 457345



**Private Sector Enforcement (Housing)**  
e: [privatesectorenforcement@ashfield.gov.uk](mailto:privatesectorenforcement@ashfield.gov.uk)  
t: 01623 457345



**Revenues**  
e: [revenues@ashfield.gov.uk](mailto:revenues@ashfield.gov.uk)  
t: 01623 457400



**Housing Lettings**  
e: [homefinder@ashfield.gov.uk](mailto:homefinder@ashfield.gov.uk)  
t: 01623 608 888, option 4



**Housing Repairs**  
e: [adcrepairs@ashfield.gov.uk](mailto:adcrepairs@ashfield.gov.uk)  
t: 01623 457999



**Housing Tenancy/Rents**  
e: [housingadmin@ashfield.gov.uk](mailto:housingadmin@ashfield.gov.uk)  
t: 01623 608 888, option 2 (Rents),  
option 3 (Tenancy)



**Homelessness Services**  
e: [housingoptions@ashfield.gov.uk](mailto:housingoptions@ashfield.gov.uk)  
t: 01623 457 252



**Lifeline Services**  
e: [first4support@ashfield.gov.uk](mailto:first4support@ashfield.gov.uk)  
t: 01623 608 888 (option 5)



**Nottingham On Call (24 hour line)**  
t: 01157 469 777



# Parks & Places UPDATE

## HUTHWAITE

### BRIERLEY FOREST PARK

At **Brierley Forest Park** the iconic miners sculptures are being reproduced in stone to provide a permanent tribute to the park's mining history and to the men killed in a mining accident at Sutton Colliery - known as 'Brierley Pit'.



Cllr Tom Hollis and Cllr Jason Zadrozny at the stonemasons

Plans to increase car park capacity moved a step closer with the proposals approved at the Council's planning committee in the summer. The miners, car park works and improvements to pedestrian entrances at The Oval, Stoneyford Road and Brand Lane are due to be completed by the end of the year.

**If you'd like to know more about any green space projects please contact the Place Team on 01623 457 091 or email [place@ashfield.gov.uk](mailto:place@ashfield.gov.uk), otherwise keep a look out on the Council's or Friends group Facebook pages for updates.**



Fitness Equipment at Annesley Recreation Ground

## KIRKBY IN ASHFIELD

### WEST PARK AND GLEN VIEW PARK

At **West Park** a toddler play unit will be installed as well as footpath improvements from the Forester Street entrance. At **Glen View Park** in Coxmoor a climbing frame will be installed in the new year, next to the scooter trail.

### NUNCARGATE RECREATION GROUND

Exciting plans for **Nuncargate Recreation Ground** will see brand new teen and junior play equipment installed. The current play area will also be repaired and refurbished, along with a new set of swings.

Cllr Jason Zadrozny, Cllr Rachel Madden and Cllr Daniel Williamson at Annesley Recreation Ground

## KIRKBY IN ASHFIELD



### KIRKBY PLAY AREAS

Works to improve the play area at **Annesley Recreation Ground** and install new outdoor fitness equipment and youth equipment were completed over the summer. Following a £85.5k investment from Annesley and Felley Parish Council and a further £19.5k from Nottinghamshire County Council's Local Improvement Scheme.

*The existing play equipment has been refurbished and repainted and the safety surfacing replaced, together with installation of a new cone climber. New youth equipment has also been installed.*

An old brick kick-wall has been removed and replaced with an outdoor gym. By scanning the QR codes, smart phone users can access demonstration videos and a Cardio App can be used on the exercise bike to track data, compete, ride virtual roads and play games.

*New bins, picnic tables and entrance signs have also been installed.*

Improvements are well underway on site at **Skegby Road Recreation Ground** (Kirkby Woodhouse) and **Titchfield Park**. The works include the installation of £58,000 worth of new play and youth equipment, which will be completed by the end of the year.

...by scanning the QR codes, smart phone users can access demonstration videos, track and a Cardio App can be used on the exercise bike to track data, compete, ride virtual roads and play games

## KIRKBY IN ASHFIELD

### SORREL DRIVE

At Sorrel Drive (Great Portland Park housing development) a specialist company has been appointed to install a new play area, following public consultation and tender process over the summer.

The installation works are due to start in January next year.



Cllr Jason Zadrozny and Cllr Daniel Williamson at Sorrel Drive



## MILL WATERS HERITAGE PROJECT

Funded by the Heritage Lottery project, a new small woodland has been planted to the rear of the Kings Mill Reservoir car park, creating an additional quarter of a mile woodland walk or run route. The planting includes over 550 new native trees and native meadow margin planting.

A footpath has been widened and upgraded which links Sutton Lawn to the Coxmoor Road entrance of the reservoir along the former railway line. The new footpath improvements mean it is now accessible by mobility scooters and wheelchairs.

**Visit the website for more information:**  
[www.millwaters.org.uk](http://www.millwaters.org.uk); or follow the  
**Facebook page: @MillWatersProject**



Cllr Matthew Relf at the new footpath



Cllr David Martin at Jacksdale Recreation Ground

## JACKSDALE RECREATION GROUND

At Jacksdale Recreation Ground the Multi Use Games Area has had tennis and cricket markings added to complement the existing provision for football and basketball. An outdoor gym has also been installed. The scheme, costing £14,250 was funded by Selston Parish Council and Nottinghamshire County Council's Local Improvement Scheme, supported by Cllr David Martin.

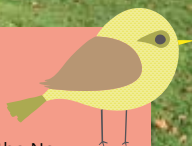


Cllr Lee Waters at Titchfield Park

## HUCKNALL

### TITCHFIELD PARK

Works to naturalise the brook, improve flood attenuation and enhance biodiversity on the park will start on site in the New Year. An online public consultation has taken place over the summer and autumn for new play and youth equipment. Design ideas will be completed by the end of the year with the new equipment due to be installed before summer 2021.



**If you'd like to know more about any green space projects please contact the Place Team on 01623 457 091 or email [place@ashfield.gov.uk](mailto:place@ashfield.gov.uk), otherwise keep a look out on the Council's or Friends group Facebook pages for updates.**



## SUTTON IN ASHFIELD

Next year Sutton will benefit from the play programme area funding, with a number of parks due to be revamped.

### Healdswood Recreation Ground

in Skegby will see three pieces of new teen equipment installed. A review on all toddler play equipment is planned, along with the repair and painting of all fencing and planting at the entrance.

Plans for **Riley Recreation Ground** in Huthwaite include the installation of a new large scale climbing unit and refurbishment of the existing equipment at the site.

Cllr Helen-Ann Smith at Healdswood Recreation Ground



## KIRKBY IN ASHFIELD

### KIRKBY LEISURE CENTRE



Progress on Kirkby's new leisure centre has accelerated as planning permission was granted earlier this year. The Council now awaits the award of the contract for the build works, while recent works with Severn Trent have seen the main sewer diverted to enable the main works commence.

Enabling works have been making the site ready for the main construction works. This includes preparation works to the redundant skate park and old rear car park to the Festival Hall. Pedestrian audits of the wider town centre area have also been carried out.

Hoardings have been installed to Lindleys Lane. These include viewing panels for members of the public to be able to view the works as they are ongoing.

## ASHFIELD DISTRICT

### TOWNS FUND UPDATE

Ashfield District Council has progressed major plans to regenerate Kirkby and Sutton. Investment of up to £50 million for Kirkby and Sutton has taken another step forward through the Government's Towns Fund initiative.

Having listened to the views of local residents, the funding will be used for a variety of projects, including creating new jobs, sports and leisure facilities and great places to visit. The bid will be submitted in January next year.

**The Council has also secured accelerated funding of £1.5million, split equally between Kirkby and Sutton.**

The Council and Discover Ashfield board have been working with partners to develop a wide range of projects which will be funded by the accelerated Towns Fund, including:

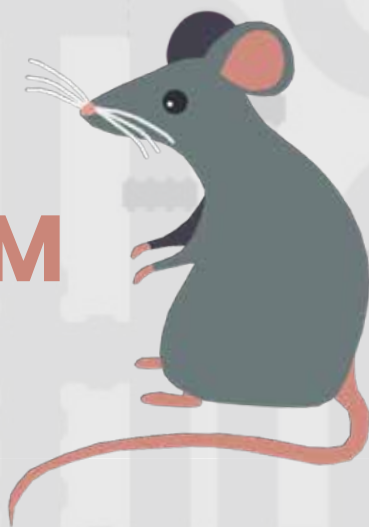
- **Cycle and walking route improvements across Kirkby.**
- **Re-use of vacant retail units on Kirkby high street to create a small-scale indoor market.**
- **Commercial property purchase in Kirkby and Sutton for residential and commercial use.**
- **Additional funding for a planned new play area at Sorrel Drive in Kirkby.**
- **A contribution to the £1.4m development at Portland College, Sutton for a sports and cultural facility.**

Cllr Samantha Deakin and Cllr Matthew Relf in Sutton Town Centre



# DO YOU HAVE RATS OR MICE IN YOUR HOME?

LET US GET  
RID OF THEM  
FOR YOU.



Our expert Pest Control Team also deal with wasps, fleas, bed bugs, ants, moles and more.

This service is also now available in Mansfield.

You can now pay for Pest Control via our all new online e-store, making it easier than ever.



Visit: [www.ashfield.gov.uk/pestcontrol](http://www.ashfield.gov.uk/pestcontrol)

Call: 0800 183 8484

Email: [environment@ashfield.gov.uk](mailto:environment@ashfield.gov.uk)



*Making Ashfield a cleaner place to live, work and visit.*

# THE **BIG** ASHFIELD SPRING CLEAN

## will return in February 2021!

***The BIG Ashfield Spring Clean took place in February and saw over 249 additional tonnes of household waste collected across the District.***

The third BIG Ashfield Spring Clean allowed all residents the opportunity to dispose of their excess waste through kerb side collections and free bulky waste collections.

Starting in Kirkby on 10th February, the campaign rolled out across the District over three weeks. Residents were invited to leave extra bagged waste with their bin collections and could book a free bulky waste collection where we'd collect up to three items.

***The most popular bulky waste item was mattresses with 886 being collected, closely followed by 762 settees. The most unusual item was an empty coffin collected from one resident's garden!***

The Spring Clean was completed just before lockdown restrictions started. Throughout lockdown Ashfield District Council were the only council in the County to continue a full waste collection service. With many people taking the opportunity to have a

clear out during lockdown, in May we ran the Bag It! campaign. Residents could leave an extra bag of household waste with their bin collection, resulting in an additional 388 tonnes of waste being collected over the two weeks.

July then saw the start of the Skip into Summer campaign. Over 80 'flying skips' travelled across the District over five consecutive Saturdays collecting general and garden waste and household objects. Over 154 tonnes of waste was collected as part of the campaign.

**The BIG Ashfield Spring Clean will be back in February 2021.**



**Councillors, ADC Officers and volunteers take part in the BIG Ashfield Spring Clean**



# A day with our Environment team



Cllr David Martin at Kingsway Park

Cllr David Martin and Environment Officers

***Cllr David Martin, Cabinet Member for Streets, Parks and Town Centres spent a day with the Environment team during the trials of a new system that will make Ashfield a cleaner and tidier place to live, work and visit.***

Our new computer system will allow us to plan street cleaning, emptying bins and grass cutting. In the new year Ashfield District Council will be publishing its new Environmental Charter, where we will make pledges to residents around environmental services.

## ***Morning***

I'm out with the street cleansing crew in Sutton. The road sweepers are ensuring that litter, glass and debris are cleared from the side of the road, whilst officers walk the pavements litter picking. As part of the new system we will be able to tell residents how often and when we'll be sweeping their road.

## ***Afternoon***

This afternoon I'm out on Kingsway Park, Kirkby with the Parks team. The team are out cutting the grass, ensuring the park continues to look fantastic. The grass is cut around 26 times each year at the park.

I then help empty the bins. We currently empty the bins daily in busy parks like Kingsway and Sutton Lawn, but the new system will allow us to monitor how often bins across the District need to be emptied. We have 993 litter bins across the District.

During the pandemic our parks and green spaces have been vital for residents to enjoy fresh air, exercise and the great outdoors. In the new year we'll be launching our Environmental Charter where we'll be making a series of pledges to residents that you can hold us to account on.

Did you  
know we sweep

**1,554**  
roads routinely  
throughout the  
year across  
Ashfield.



***We want to hear your thoughts on what's working and what's not. Please share your feedback with us. Email: [environment@ashfield.gov.uk](mailto:environment@ashfield.gov.uk) Or direct message on Facebook or Twitter***



Cllr Samantha Deakin and volunteers at Let's All Eat foodbank in Sutton

# Ashfield is set to receive vital funding to fight food poverty

***Feel Good Food has supported local foodbanks throughout the pandemic.***

A project jointly funded by Ashfield District Council and Ashfield Health and Wellbeing Partnership, Feel Good Food has ensured the District's most vulnerable residents have access to food.

The project works in partnership with Let's All Eat foodbank (Sutton), Kirkby Community Storehouse food bank

and Engage Under One Roof food bank (Hucknall).

To support its continued hard work, Feel Good Food has received £15,000 from the Nottinghamshire County Council Emergency Assistance fund. This will support food provision and running costs of these groups over autumn and winter months.



Cllr Andy Meakin at Kirkby Storehouse foodbank

“To support its continued hard work, Feel Good Food has received £15,000 from the Nottinghamshire County Council Emergency Assistance fund”



# You can now pay to park with PayByPhone

- ✓ No need for cash or to touch Pay & Display machines
- ✓ No need to queue
- ✓ Receive a reminder before your parking expires
- ✓ Extend your parking session from anywhere

Download our app today!



For more info please visit:  
[paybyphone.co.uk/Ashfield](http://paybyphone.co.uk/Ashfield)

