

MARCH 2021

# Ashfield

MATTERS

## INCLUDING

Towns fund update

Covid business support

New CCTV in Sutton

**£6.27m**

secured for Sutton  
Town Centre

# COUNCIL TAX FREEZE



# View the easy way.

Open Ashfield is the quick and easy way to view your Council Tax online.

- View payments made and outstanding payments
- Details of reductions and reliefs
- Sign up for electronic billing
- Request a bill
- Make a payment



SIGN UP TODAY: [WWW.ASHFIELD.GOV.UK/OPENASHFIELD](http://WWW.ASHFIELD.GOV.UK/OPENASHFIELD)

Digital Ashfield

**Find out more online at**  
**[www.ashfieldenergyefficiency.org](http://www.ashfieldenergyefficiency.org)**



We're helping people live in warm, healthy homes.

We provide free, independent advice for saving on heating your home

- ◆ **Get the best energy deal**
- ◆ **Reduce energy use**
- ◆ **Heat a healthy home**
- ◆ **Grants and bill support**



- ◆ **Call us 01623 784357**
- ◆ **Email us [energy@ashfieldca.org.uk](mailto:energy@ashfieldca.org.uk)**



Cllr. Jason Zadrozny, Leader of the Council

# Welcome...

**to our new edition of Ashfield Matters - your guide to what the Council is doing across the District.**

**This year has already been a successful one for the Council with the roll out of the BIG Ashfield Spring Clean last month, works on the new Kirkby leisure centre starting and the announcement that Ashfield District Council will be freezing our part of your council tax this year.**

Firstly, thank you to everyone that took advantage of the Spring Clean. That's just one way we are helping to keep the District a cleaner place, on page 11 you'll find details of our new Environmental Enforcement team who will be cracking down on littering and dog fouling.

As you'll have seen from the front cover, I am pleased to announce that this year Ashfield District Council is freezing it's part of the Council Tax. We are confident we can continue to deliver high quality services without any extra cost to residents this year.

Our Towns Fund bid has now been submitted and full details of the proposed projects can be found later in the magazine, along with the exciting plans for a new indoor market in Kirkby as part of the accelerated Towns Fund.

The build on the new Kirkby leisure centre is well underway and I am delighted we are investing in a second pool for Hucknall. We will continue to provide you with regular updates and more details on our leisure transformation can be found from page 23.

I am pleased that the vaccination programme is successfully continuing across the county, and as I write this a walk in testing centre and community testing centre are opening in the District. I want to thank residents for continuing to play their part in following restrictions. I am hopeful that by the time we publish the next magazine restrictions will have begun to be lifted.

I hope you enjoy this issue and don't forget to let me know if you have any comments you'd like to make.

**Cllr Jason Zadrozny, Leader  
Ashfield District Council**



## All about us

Ashfield Matters is produced by Ashfield District Council's Communications Team.

The magazine is delivered to every household in the District.

Katherine Green, **01623 457307**  
**corpcomms@ashfield.gov.uk**

If you require assistance with this document or would like it in a different format, please contact Customer Services on  
**01623 450000**

## Contact us

You can contact Ashfield District Council in a number of ways:

Web: **www.ashfield.gov.uk**  
Tel: **01623 450000**  
Fax: **01623 457585**  
Email: **info@ashfield.gov.uk**  
Typetalk: **18001**  
**01623 450000**

## Making a payment

Did you know you can make payments for a range of the Council's services using our online payment service - have a look on our website  
**www.ashfield.gov.uk/pay**

Alternatively, you can call our 24 hour payment line on **08453 726173**



**www.facebook.com/  
ADCashfield**



**www.twitter.com/  
ADCashfield**

# Environmental charter coming soon

As part of our ongoing commitment to making Ashfield a cleaner and safer place to live, work and visit, we are creating an environmental charter that will set out our pledges to you!

These are promises we'll make to residents outlining our commitment to waste, parks and open spaces and environmental crime. This will be shared with all residents in the coming months.



Cllr Samantha Deakin cleaning up in New Cross

## ASHFIELD DISTRICT

### Business Support LinkedIn group

Are you a business in Ashfield?  
Looking for news, support and networking opportunities with other local businesses?

The Succeed in Ashfield LinkedIn page is now available for business owners and managers whose business is Ashfield based.



Search Succeed in Ashfield on LinkedIn and join us today

## Discover Ashfield



# SPRING PHOTO COMPETITION

3 2 1 1 2 3

### Cameras at the ready!

The next Discover Ashfield Photography Competition is taking place in Spring this year.

Please go to the Discover Ashfield website [www.discoverashfield.co.uk](http://www.discoverashfield.co.uk) or the Discover Ashfield Facebook page where more details will be released soon on how to enter. Terms and conditions apply.





Cllr Jason Zadrozny out with the Council's Street Cleaning Team

## A BIG Thank You!

We'd like to thank everyone that took part in this year's BIG Ashfield Spring Clean.

We collected tonnes of extra bagged waste and hundreds of bulky waste items from across the District. Full details of the Spring Clean will be included in the next edition.

THE **BIG** ASHFIELD  
SPRING CLEAN



# Improvements coming to Selston Country Park

*Plans to revitalise Selston Country Park have begun.*



Public consultation to discover what local Selston residents would like to see on site will take place in the coming months.

Cllr David Martin, Cllr Andy Gascoyne and Cllr Arnie Hankin with the new raised flower beds

**Councillors David Martin, Andy Gascoyne and Arnie Hankin have led work to invest in Selston Country Park.**

Works have so far seen the building of a memorial park including three new flag poles and raised flower beds. Disabled friendly benches have also been added to compliment the Commemorative benches previously installed.

The Council plans to make Selston County Park a destination park and bring a vibrant events programme to the rural area. Plans for the site include the reopening the site's cafe, improvements to paths and cycle routes, creating nature trails and installing new play equipment.



Cllr David Martin and Cllr Arnie Hankin with the Memorial Bench

# Ashfield District Council awards £12k to vital Community Groups

**Community groups from across Ashfield have received cheques from Ashfield District Council which total £12,000 in grant funding.**

The Ashfield Community Fund supports people in Ashfield by providing grants to groups who work to directly benefit communities in the District.

In 2020, the Council allocated an extra £10,000 to 12 groups who responded to support the Covid-19 emergency situation.

**A total of £12,000 has been awarded to 17 groups, varying from heritage groups and community projects in churches to a theatre group and a community gym.**

- All Saints Centre, Huthwaite
- Allsorts Preschool, Underwood
- Central Methodist Church, Hucknall
- First Art Leamington
- Holy Cross Parents Friends Group
- Hucknall Bumps to Babies and Beyond
- Hucknall Hope Lea Project
- Hucknall Walking Football Club
- Kirkby Heritage (Kirkby Living Memory)
- Mine2Minds Education
- Nonsuch Theatre Ltd
- OneWalk/OneConversation
- OpenDoor
- Pentrich and South Wingfield Revolution Group
- Starbox Community Gym
- St John Ambulance
- The Lamasas Scout and Guide Group



Cllr David Martin



Cllr John Wilmott



Cllr Andy Meakin



Cllr Samantha Deakin



# New CCTV in Sutton

A brand new CCTV camera has been installed on Welbeck Street, Sutton.

This CCTV camera follows the recent creation of a special task force by Cllr Samantha Deakin, Councillor for Sutton Central and New Cross, to tackle Anti-Social Behaviour in the New Cross area.

This is part of a £24.4k investment into CCTV in Ashfield. In partnership with Nottinghamshire Police, the Council has secured four deployable cameras that will target anti-social behaviour hotspots.

SUTTON IN ASHFIELD



## COMMUNITY NEWS

KIRKBY IN ASHFIELD

### Kirkby resident sentenced for breaching Community Protection Notice



**An Ashfield resident has been prosecuted by Ashfield District Council after breaching his Community Protection notice banning him from the Coxmoor estate in Kirkby.**

The resident was issued the Community Protection Notice by Ashfield District Council for causing significant disruption to the lives of others. Their violent behaviour resulted in criminal damage, physical and verbal threats to local residents and assaulting a Police Officer.

**After breaching the order by entering Coxmoor and causing a nuisance in Sutton and Kirkby town centres, the Councils Community Protection team took swift action and applied for a Criminal Behavior Order.**

They were granted the Order which forbids entry to the Coxmoor Estate, Kirkby-in-Ashfield, engaging in conduct which causes nuisance or annoyance and threatening any person living, visiting or working in Sutton and Kirby-in-Ashfield for the next three years. They were also fined £800 for breaches of his Community Protection Notice, £400 costs and victim surcharge of £90.



Cllr Jason Zadrozny, Cllr Helen-Ann Smith and  
Cllr Samantha Deakin with the new CCTV camera

# PROTECTION ROUND UP

## Operation Springboard

**Operation Springboard is a joint Nottinghamshire Police and Ashfield District Council partnership initiative solely dedicated to tackling Anti-Social Behaviour across the district, with key focus on providing hi-visibility reassurance to our neighbourhoods, town centres and public spaces.**

Both agencies will use their powers to respond effectively to Anti-Social Behaviour across the district. The teams will work closely together at an operational level to make Ashfield a safe, secure place to live, work and visit.

## Residents fined for Waste Build-up

*Two residents have been prosecuted for failing to clear waste from their properties.*

The two residents, one from Kirkby and one from Huthwaite, were given multiple warnings and subsequently issued with a Community Protection Notice, following complaints from neighbours about rubbish dumping.

After ignoring several warnings issued by Ashfield District Council, both were issued with a Fixed Penalty Notice. Failing to pay their Fixed Penalty Notices, the Council's Community Safety Team took swift action and applied to take the cases to Magistrates Court.

The Kirkby resident was fined £220, ordered to pay a victim surcharge of £32 and costs of £507.52. A total of £759.52.

The Huthwaite resident was fined £200 for failing to comply with the Community Protection Notice, ordered to pay a victim surcharge of £32.00 and costs of £582.44. A total of £814.44 to be paid within 28 days.



Waste at the properties



# I ♥ ASHFIELD



Cllr John Wilmott with Covid Support Officers in Hucknall town centre



ASHFIELD  
COVID UPDATE

## Covid Support Officers hit the streets

*Ashfield District Council's Covid support team has been out and about visiting and advising local businesses on how to stay Covid safe.*

Covid Support Officers are supporting the Council's Town Centre team. They have visited businesses across the District offering help and advice on managing a Covid safe environment for their staff and customers, as well as issuing information on business grants and financial help.

\* Figures correct at January 2021

Number of visits to retail premises since July 2020

**828**

Number of businesses still trading in Ashfield

**418**

Number of businesses offering click and collect only

**33**

## Hand Sanitiser stations installed at town centre car parks

*Ashfield District Council has installed hand sanitiser stations at its town centre car parks as part of its ongoing plans to make town centres safe places to enjoy.*

The free standing hand sanitiser stations are located next to payment stations at town centre car parks in Hucknall, Sutton and Kirkby as well as Huthwaite Market Place and Kings Mill Reservoir.



Cllr Lee Waters with the new hand sanitiser stations



Councillors  
Helen-Ann Smith and  
David Shaw, Community  
Protection Cabinet Team,  
have launched a new  
Enforcement Team to  
patrol streets, parks  
and town centres.

# Ashfield District Council launches new Enforcement Team

***Ashfield District Council will be taking a zero tolerance approach to environmental crime as part of its new enforcement scheme.***

A new dedicated Environmental Enforcement team will be created to further tackle littering and dog fouling across the District. The Council will be working with specialist private sector enforcement provider WISE on a 12 month pilot that will see fixed penalty notices issued to those caught committing environmental crime in our communities.

The team of Enforcement Officers will patrol town centres, parks & green spaces and high footfall areas.

The new scheme comes at no additional cost to the Council, and will actually see us generate money that we can invest back into the District.

“ The new scheme comes at no additional cost to the Council, and will actually see us generate money that we can invest back into the District. ”





**“ As Cabinet Member for Housing, I’m proud of our relationship with our tenants, but we are always striving to make our services even better. We are committed to working with tenants to improve our housing service and estates. By working with us and telling us your views, we can make sure our service meets your needs. ”**



Cllr Tom Hollis, Cabinet Member for Housing

# Have a say in imp Housing Services

***We are committed to working with tenants to improve our housing service and estates. By working with us and telling us your views, we can make sure our service meets your needs.***

We are looking for tenants to join our Customer Opinion and Influencing Network (COIN) and our Tenants Gateway to shape our housing service.

As a COIN member your role will be to provide views and feedback on the housing services that you receive as a tenant. This feedback will be used to review and improve services.

**“ How you get involved is up to you. There are no time commitments with this role. ”**



**If you would like to get involved or would like more information please email: [coin@ashfield.gov.uk](mailto:coin@ashfield.gov.uk) or contact Martin Guest, Projects and Partnerships Lead Officer on 01623 608966.**





# roving

How you get involved is up to you. There are no time commitments with this role.

As a Tenants Gateway member your role will be to meet with senior managers to review housing performance including complaints, discuss changes to housing services and review policies and procedures. Meetings are held every two months.

**We will offer training and full support.**

## New Complaints process for Council Tenants

*The Housing Ombudsman Service's new Complaint Handling Code will use the learning from complaints to drive service improvements.*

The Housing Ombudsman looks into tenants' complaints about housing organisations, resolving disputes between tenants and their landlords.

The Code provides the future framework for complaint handling by social landlords and introduces greater consistency across landlords' complaint procedures. It also creates a resident-focused process that makes it easier for tenants to make complaints about their landlords.

For further information regarding the new Code, please visit: [www.housing-ombudsman.org.uk](http://www.housing-ombudsman.org.uk).

For information on the Council's updated complaints policy and to see our self-assessment against the code please visit: [www.ashfield.gov.uk](http://www.ashfield.gov.uk).



**We always try to get things right, however, we know that sometimes they go wrong. You can make a complaint by:**



**Completing our online form at [www.ashfield.gov.uk/residents/housing/making-a-complaint](http://www.ashfield.gov.uk/residents/housing/making-a-complaint)**



**Email us at: [housingcomplaints@ashfield.gov.uk](mailto:housingcomplaints@ashfield.gov.uk)**



**Telephone by calling: 01623 608888**



**Or via social media**

# COUNCIL TAX FREEZE



*As Support Cabinet Member for Finance, I am proud that the Council is on the side of residents by freezing our part of this year's council tax.*

Cllr Lee Waters, Support Cabinet Member for Finance

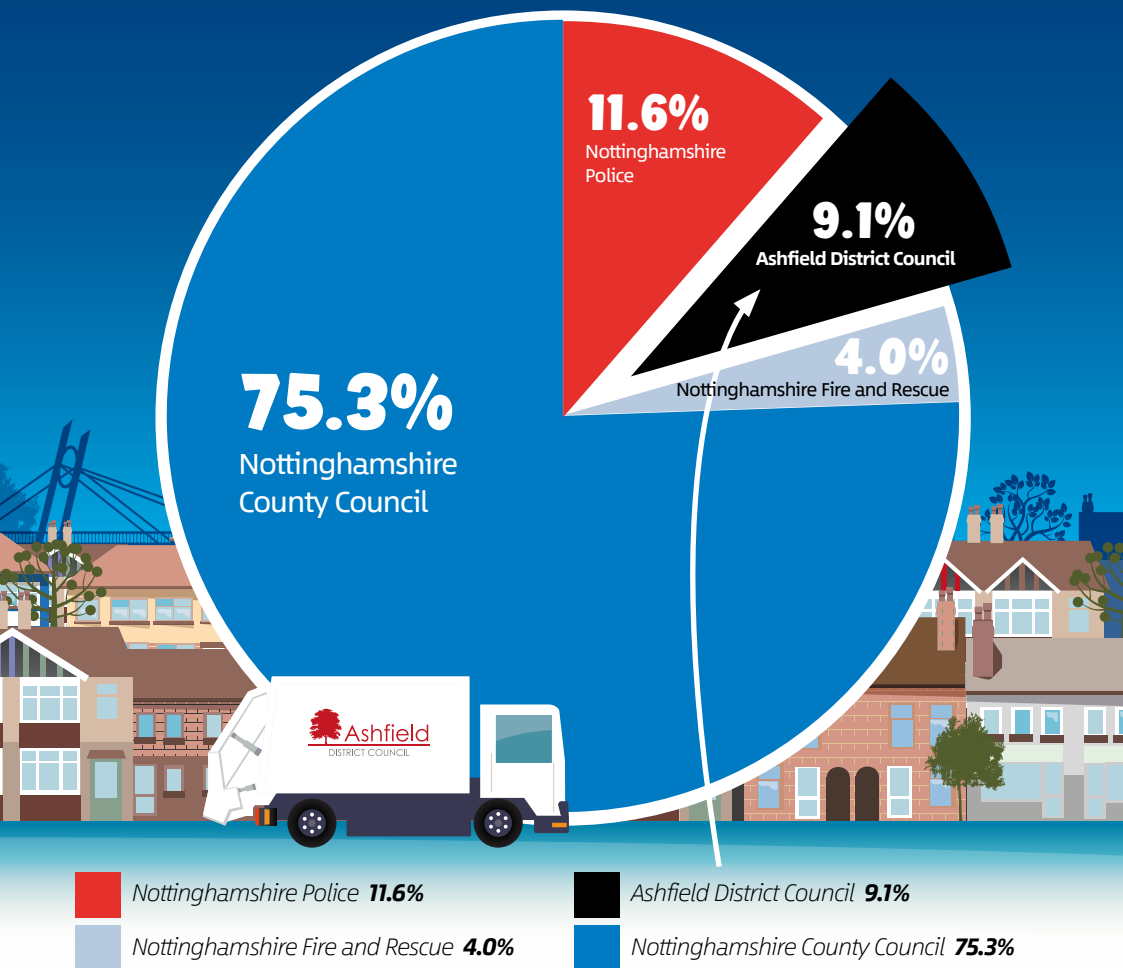
## THE BIG FREEZE HITS ASHFIELD

***Ashfield District Council's portion of your Council Tax will be frozen for 2021/22.***

Despite ongoing cuts in funding Ashfield District Council has a proven track record of setting its annual budget and delivering services within the budget set. Through savings, efficiencies and income generation Ashfield District Council is able to propose a freeze its Council Tax for the next 12 months.



“**Ashfield District Council receives just 9.1% of the Council Tax you pay and provides services in all areas of the district.**”



**Ashfield District Council receives just 9.1% of the Council Tax you pay and provides services in all areas of the district. These include:**

- Parks and Open Spaces
- Markets and Events
- Community Safety
- Planning
- Building Control
- Environmental Health
- Licencing
- Street Cleansing
- Leisure Centres
- Regeneration
- Benefits and Support
- Pest Control
- Cemeteries
- Health and Safety
- Waste Collection
- Food Safety
- Housing
- Stray Dog Service
- Elections
- Car Parks

**Plus much more...**

# Parks & Places UPDATE

Ashfield Parks  
and Green Spaces

£1.8m

Investment  
Programme

KIRKBY IN ASHFIELD

*The Council's ambitious Parks and Green Spaces Investment Programme was further expanded with additional funding of over £300k agreed in the autumn, to boost the total for this financial year to over £1.8m. The additional funding is being used to improve smaller neighbourhood sites, including additional pieces of play equipment, bins and signage, footpath works and tree planting.*



KIRKBY IN ASHFIELD



Cllr Andy Meakin at the new Glen View Park



Cllr Daniel Williamson oversees work at Hornbeam Park



Cllr Andy Meakin with the new equipment on Kingsway Park

New items of play equipment have been installed at **Glen View Park** (off Warwick Close) and **Kingsway Park** providing new opportunities for play and social interaction. The existing swings will soon be replaced at **Morven Park**.

The installation of the new play area at **Hornbeam Park** is nearing completion, which has been designed and installed by a Nottingham-based play company appointed by the Council. Works to the park are being completed by the developer and

include the installation of new footpaths, access improvements, signage, benches and bins, fencing along the railway, planting and seeding.



**Keep a look out on the Council's Facebook page [facebook.com/ADCashfield](https://www.facebook.com/ADCashfield) for details on when the park will be officially opened to the public following the completion of all works.**



Cllr Daniel Williamson at the new play equipment on Swifts Park



## KIRKBY PLAY AREAS

Improvement works have been completed at **Swifts Park (formerly known as Skegby Road Recreation Ground)**, Kirkby.

The works include the old play equipment being replaced with new play and youth equipment, access improvements and a new path linking all entrances to the park.

Ashfield Parks and Green Spaces

£1.8m  
Investment Programme



Cllr Daniel Williamson at Nuncargate Recreation Ground

Works to refurbish the play area at **Nuncargate Recreation Ground** with the installation of new equipment are nearing completion. This will be complemented by the installation of new youth equipment. -

The BMX track at **Holidays Hill** has been resurfaced along with the installation of new entrance signage.

## RESURFACED FOOTPATHS

The existing footpath from **Sutton Middle Lane** to **Lindrick Road** has been resurfaced with compacted crushed stone including an improved link from **Rowan Drive** to **Greenwood School**.

Cllr Warren Nuttall at the new paths on West Park



Cllr Andy Meakin at the new paths near Rowan Drive

The footpaths around **West Park** have been resurfaced with a compacted crushed stone.

New signage and a new toddler unit have also been installed.



# Parks & Places UPDATE

## SUTTON IN ASHFIELD

### MILL WATERS HERITAGE PROJECT



Cllr Samantha Deakin at Kings Mill Reservoir's new car park

The new car park was opened before Christmas and the new trail was completed including wild flower planting and 538 new trees.

### BRIERLEY FOREST PARK



Cllr Helen-Ann Smith at the resurfaced Mountain Bike Trail on Brierley Park

Works to increase the car park capacity by 40 spaces have been completed along with improvements to the pedestrian entrances at The Oval, Stoneyford Road and Brand Lane.

The Mountain Bike Trail at the **Stanton Hill** end of the park has been resurfaced and improved to enhance the existing facility for visitors.

### TITCHFIELD PARK

Works to naturalise the brook, improve flood attenuation and enhance biodiversity started in February.

Funding has been secured for new play equipment which will be installed ready for the summer. Keep a look out on the Council's Facebook page for further details.

### NABBS LANE PARK

The Mountain Bike Trail and BMX track has been resurfaced, enhancing this popular facility.

### HEALDSWOOD RECREATION GROUND



Cllr Helen-Ann Smith at Healdswood Recreation Ground

Works at **Healdswood Recreation Ground** are nearing completion which include refurbishment of the play equipment and installation of new youth equipment.

### RILEY RECREATION GROUND

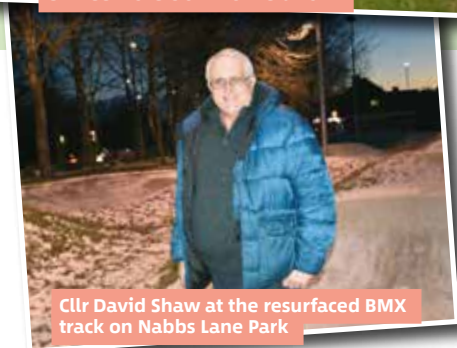


Cllr Tom Hollis sees work begin at Riley Recreation Ground

Improvement works at **Riley Recreation Ground** have been completed and include the installation of new multi-climb play units and additional equipment for toddlers.



**Cllr Lee Waters at Titchfield Park**



**Cllr David Shaw at the resurfaced BMX track on Nabbs Lane Park**

## SUTTON IN ASHFIELD

### HUTHWAITE WELFARE PARK



**Cllr Tom Hollis at Welfare Park in Huthwaite**

Initial ideas to revitalise Huthwaite Welfare Park are being prepared to share through a public consultation. Improvements to the park are due to start in the autumn.

## RURAL AREA

### CROMFORD CANAL



**Cllr David Martin at Cromford Canal**

New interpretation boards will soon be installed highlighting local walking routes around the former canal network, providing detail on the area's rich historical and industrial past and identifying where ruins and monuments can be viewed on the walks.

## SUTTON IN ASHFIELD

### MEET THE NEW CHARACTERS AT THE HERITAGE CENTRE:

The new heritage interpretation has been installed at the Mill Waters café at Kings Mill Reservoir and Rumbles café, at Sutton Lawn.

The heritage interpretation presents an insight into the industrial, social and natural heritage and story along the Mills corridor from Sutton to Mansfield.





# Huge Investment co Kirkby and Sutton



Artists impression of Kirkby's new Indoor market

## *The Towns Fund bid for the Kirkby and Sutton area was submitted at the end of January.*

The Town Investment Plan provides a blueprint for sustainable economic, environmental and social regeneration. Including delivering jobs, long-term economic and productivity growth, new homes, improved transport infrastructure, reduced carbon and new educational and cultural facilities. 17 projects have been developed to include in the bid, these include:

**For business and education:** Automated Distribution and Manufacturing Centre to create a national centre of excellence; construction and civil engineering education centres; library innovation centres to support people with digital skills.

**For health and wellbeing:** a new Kirkby Health Hub and Sports Hubs at Kingsway Park and Sutton Lawn.

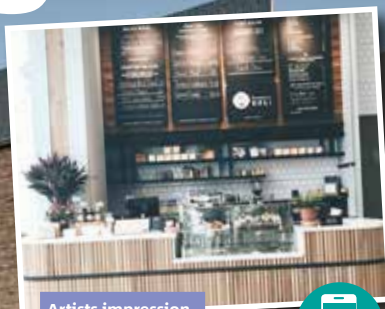


Artists impression of Kirkby Plaza

**To boost the area's visitor economy:** a new Planetarium and Science Discovery Centre at Sherwood Observatory; a new leisure facility at Kings Mill Reservoir and a network of cycling and walking routes across the area, connecting visitor attractions, homes and places of work.



# ming to



Artists impression

## The new Kirkby Indoor Market is coming...

*As part of the Towns Fund Accelerated Programme, the Council is repurposing three vacant units on the pedestrianised section of Lowmoor Road in Kirkby Town Centre.*

The new indoor market will create modern space for business start-ups or existing businesses seeking to branch out in a friendly, distinctive space.



**Do you have a business that could be part of our new indoor market?**

Get in touch with us to register your interest  
[markets@ashfield.gov.uk](mailto:markets@ashfield.gov.uk)  
or phone 01623 551385



Artist Impression of cafe area



Cllr Jason Zadrozny in Kirkby

**To make Ashfield Greener:** the gateway area around Kirkby train station will be developed to provide better facilities; all new buildings funded through the Towns Fund will be low carbon, utilising ground source and solar energy and existing buildings will be adapted to use solar energy.

***We are due to receive an offer of funding from the government in the spring.***

## Walking and Cycling improvements on the way!

**Walking and cycling routes are being upgraded between Kirkby and Sherwood Business Park.**

The work will upgrade surfacing, signage and access points.

# £6.27m secured for Sutton Town Centre



Cllr Matthew Relf who led the town centre funding bid with local ward Cllr Samantha Deakin

***Ashfield District Council has been successful in securing £6.27m from the government's Future High Streets competition.***

Council officers and Councillors have been working on the proposals since the fund was first announced in 2018. The announcement that the bid for Sutton-in-Ashfield was successful will provide a much needed boost to the town centre during these challenging times.



Artists impression of Fox Street pop-up food court

## Projects included in the Future High Streets bid included:

### **Sutton Academy Community Theatre/Cinema**

renovating the existing Sutton Community Academy theatre and creating a foyer area, featuring a bar and café so that in the evenings and weekends the theatre can become a public facing theatre, cinema and live music venue.

**Sutton Maker Space and Business Hub** creating a Maker Space and business hub. The Maker Space is for anyone who lacks the funds and/or space for tools at home to be able to pay a small membership fee for access to woodworking, metalworking, sewing machines, 3D printers, laser cutters, etc. This can be for hobbies, sense of community, learning a new skill or starting and building a business.

**Low Street vacant units** for the purchase and refurbishment of vacant retail units on Low Street to give them a new purpose on the ground

floor and convert upper floors into high quality apartments.

### **Fox Street pop-up food court and car park**

transformation of the vacant plot behind Lloyds Bank into a new car park and public space that provides connectivity between ASDA and Portland Square to attract more people into the town centre. The space can also be set up as a venue for pop-up food stall events.

**Market Place new build** a new building on the Market Square that will provide space for community uses and high quality residential apartments.

As the government only gave a partial grant of money the Council will now submit amended plans to the government that achieve as many of these exciting plans as possible.

# Kirkby's £15.5m Leisure Centre 'will rival any other in the Country'

*Construction works at the £15.5million leisure centre and community hub project on the Festival Hall site in Kirkby-in-Ashfield has now started.*

**Ashfield District Council Leader Cllr Jason Zadrozny, Chairman Cllr Andy Meakin and Cllr Daniel Williamson have met with Kier representatives at the new leisure centre site in Kirkby to see the work begin.**

The new leisure centre in Kirkby-In-Ashfield will be built alongside the existing leisure centre, Festival Hall. It will bring brand new facilities including a 25m community pool with moveable floor, sauna and steam rooms, fitness suite, clip and climb and adventure play. The new centre will open in spring next year with demolition of the old Festival Hall completed by autumn 2022.

Kier will be working in collaboration with Ashfield District Council and Festival Hall to keep the existing

leisure facilities open throughout the construction period.

Kier are also looking at a number of ways to support the local community throughout the build. These include workshops for young people, volunteer events, site visits and work placements.

“...It will bring brand new facilities including a 25m community pool with moveable floor, sauna and steam rooms, fitness suite, clip and climb and adventure play.”



Cllr Andy Meakin, Cllr Daniel Williamson and Cllr Jason Zadrozny stood on the site of the new swimming pool

# Hucknall Leisure Centre set to be transformed

everyone  
ACTIVE

Feel better for it



Cllr Lee Waters, Cllr Jason Zadrozny and Cllr David Shaw met with Lorenzo Clark, Everyone Active Contract Manager at Hucknall Leisure Centre to take a look at plans for the additional pool

**Plans are in place to bring huge improvements to Hucknall Leisure Centre.**

**Hucknall Leisure Centre will see a brand-new swimming pool added to the facility as well as a revamped fitness suite and other improvements.**

The second pool will deliver a different offer to the existing lane pool, providing something for everyone.



“On top of the brand-new leisure centre being built in Kirkby, Sutton’s Lammas Leisure Centre will also see improvements to its fitness suite and play offer.”



Cllr Samantha Deakin, Cllr Helen-Ann Smith and Lorenzo Clark, Everyone Active Contracts Manager at Lammas Leisure Centre swimming pool



Artist concept of the new fitness suite at Hucknall Leisure Centre

Following Everyone Active’s successful tender to remain the Council’s leisure provider, Ashfield District Council is set to transform its existing leisure offer.

**The works will see the fitness suite extended as group exercise studios and the reception area also set to be refurbished.**

The leisure centre will become even more inclusive, with new sensory equipment in swimming pools, an online activity offer and a substantial community programme. This will include Feel Good Families

events, holiday hunger clubs, activities in areas of deprivation and free under-17s holiday provision.

It will also see concessionary rates for priority groups continue and the inclusion of apprenticeships, work placements and volunteering opportunities for Ashfield residents.

Following a procurement process, Everyone Active were the successful bidder for the new leisure contract starting 1st April 2021 and running for ten years.



You can now pay for even more services online

Pay the  
easy way.



Digital As#field

[WWW.ASHFIELD.GOV.UK/PAY](http://WWW.ASHFIELD.GOV.UK/PAY)

Don't miss out on  
continuing your Garden  
Waste Recycling in 2021!

STILL JUST  
**£28**  
PER YEAR



Join over 21,000 residents  
who signed up in 2020, it's  
now easier than ever to  
pay online or by Direct Debit!

[www.ashfield.gov.uk/gardenwaste](http://www.ashfield.gov.uk/gardenwaste)

 **Ashfield**  
DISTRICT COUNCIL

# Don't miss out on your chance to vote on 6th May!

**Nottinghamshire County Council and Police & Crime Commissioner elections are fast approaching.**


Ashfield's residents are being urged to make sure they're registered to vote, so they don't miss out on the chance to choose who they'd like to be their County Councillor and Police & Crime Commissioner.

You won't be able to vote if you aren't on the Electoral Register. If you don't know if you are registered, please call Ashfield District Council on **01623 457 321** to find out.


Anyone who does need to register to vote should visit [www.gov.uk/register-to-vote](http://www.gov.uk/register-to-vote) with their National Insurance number to hand by 19th April 2021.

**You can apply for a postal vote by completing the Postal Vote application form and returning it to us [www.gov.uk/government/publications/apply-for-a-postal-vote](http://www.gov.uk/government/publications/apply-for-a-postal-vote)**

**Polling cards will be sent out at the end of March and these will inform electors how to cast their vote. Electors should check their polling card to find out if their polling station has changed.**

 *Exercising your right to vote is an important part of democracy and a direct way of influencing what happens in your local area. The elections in May are your opportunity to choose a representative on the County Council, which provide services across the County, and the Police & Crime Commissioner for Nottinghamshire.*

*"Here in the Elections team we have been putting plans in place to ensure that polling stations are as safe as possible, but remember there are several ways to have your say in the elections - you can vote in a polling station, by post, or by appointing someone you trust to vote on your behalf, which is known as a proxy vote.*

*"If you're thinking about voting by post, you can apply now. This will make sure we can get your application processed early, and your postal vote can be sent to you more quickly. It's easy to apply and you can find out how by visiting the Electoral Commission website. Make sure that you vote on 6 May 2021. *

**Rachel Newton, Electoral Services Assistant at Ashfield District Council**



# Useful contact details...

*Our offices at Urban Road (Kirkby), Brook Street (Sutton) and Watnall Road (Hucknall) are currently closed to the public.*



If you cannot resolve your query or access a service online or over the telephone. Appointments are needed to limit the number of customers at a time to comply with COVID-safe requirements.



**ADC Switchboard**  
t: 01623 450000



**Democratic Services**  
e: democratic.services@ashfield.gov.uk  
t: 01623 457232



**Duty Planner**  
e: dutyplanner@ashfield.gov.uk  
t: 01623 457388



**Elections**  
e: regelec@ashfield.gov.uk



**Environment and Waste**  
e: environment@ashfield.gov.uk  
t: 0800 183 8484



**Cemeteries**  
e: cemeteries@ashfield.gov.uk  
t: 01623 457462



**Anti-Social Behaviour**  
e: asb@ashfield.gov.uk  
t: 01623 450000



**Lost/Stray Dogs**  
t: 01623 457345



**Private Sector Enforcement (Housing)**  
e: privatesectorenforcement@ashfield.gov.uk  
t: 01623 457345



**Revenues**  
e: revenues@ashfield.gov.uk  
t: 01623 457400



**Housing Lettings**  
e: homefinder@ashfield.gov.uk  
t: 01623 608888, option 4



**Housing Repairs**  
e: adcrepairs@ashfield.gov.uk  
t: 01623 457999



**Housing Tenancy**  
e: tenancy@ashfield.gov.uk  
t: 01623 608888 (option 3)



**Housing Rents**  
e: income@ashfield.gov.uk  
t: 01623 608888 (option 2)



**Homelessness Services**  
e: housingoptions@ashfield.gov.uk  
t: 01623 457252



**Lifeline Services**  
e: lifeline@ashfield.gov.uk  
t: 01623 608888 (option 5)

## Follow us on social media!

*You can also keep up to date with all things Ashfield District Council on our social media channels.*

Follow us for news updates, job adverts, events, competitions, meetings and more! Our direct messaging inbox is open to for all your enquiries.



**Ashfield District Council**



**@ADCashfield**

**www.ashfield.gov.uk**

