

**SPRING 2021**

# Ashfield **MATTERS**

## **INCLUDING**

Towns fund update

Covid business support



**£1.8m**  
Investment Programme  
in Ashfield's Parks and  
Green Spaces



# Kirkby's new leisure centre

Building work begins on new  
state of the art facility

**FREE**  
Bulky waste collections  
**THE BIG ASHFIELD**  
SPRING CLEAN  
See inside for dates

# The Tenant Portal

online and ready when you are.

Digital Ashfield

The Tenant Portal provides self-service for Ashfield District Council tenants, with instant online access to information about your tenancy.

- Make a rent payment
- View your rent account
- Access your tenancy information
- Report and view outstanding repairs
- View details of your tenancy
- Update personal contact information
- Contact us



Sign up here: [www.ashfield.gov.uk/housing](http://www.ashfield.gov.uk/housing)

## DID YOU KNOW?

Ashfield District Council offers motorists a cost effective, reliable, trustworthy and independent MOT testing service



FROM ONLY  
**£40**

Our MOT station is open Monday to Thursday from 8am with last test at 3pm and Fridays from 8am with last test at 2pm. New COVID-19 procedures will be explained when booking.

For more information or to book an MOT please telephone 01623 457885 / 457889.



**Cllr David Martin, Cabinet Member  
for Streets, Parks and Green Spaces**

# Welcome...

**to our new edition of Ashfield Matters - your guide to what the Council is doing across the District.**

**After an unpredictable 2020, the Council has a lot to look forward to in 2021. Throughout the pandemic we have continued to deliver on key projects including the new Kirkby Leisure Centre, Towns Fund bid and £1.8m investment into Ashfield's parks & green spaces.**

Ground has been broken on the new leisure centre site and the developers are on track for a 2022 opening. At the end of last year we also made exciting announcements about investments in Hucknall and Lammis Leisure Centres. You can find more on Kirkby Leisure centre on page 19.

This edition we are featuring the £1.8m investment we are making in our parks and green spaces. There has been a focus on improving parks and playgrounds in Kirkby including a brand new park on Sorrel Drive. The new miners statues are now in place at Brierley Forest Park, providing a lasting memorial to the miners who lost their lives. Further works have been completed a Kings Mill Reservoir and new interpretation boards have been installed on the former Cromford Canal. You can read about these and other projects from page 12.

As part of our Towns Fund bid we have developed a range of projects that will create thriving and revitalised town centres, you can find details of these exciting projects on page 16. We will hear if our bid has been successful later in the year.

As Cabinet Member for Streets, Parks and Green Spaces I want to say how proud I am of the projects we are delivering across the District. Despite the impacts Covid has had, and continues to have our projects and plans remain on target and there is a lot for residents to look forward to.

I hope you enjoy this issue and don't forget to let me know if you have any comments you'd like to make.

*David Martin*

**Cllr David Martin**  
Cabinet Member for Streets,  
Parks and Green Spaces



## All about us

Ashfield Matters is produced by Ashfield District Council's Communications Team.

The magazine is delivered to every household in the District.

Katherine Green, **01623 457307**  
**corpcomms@ashfield.gov.uk**

If you require assistance with this document or would like it in a different format, please contact Customer Services on  
**01623 450000**

## Contact us

You can contact Ashfield District Council in a number of ways:

Web: **www.ashfield.gov.uk**  
Tel: **01623 450000**  
Fax: **01623 457585**  
Email: **info@ashfield.gov.uk**  
Typetalk: **18001**  
**01623 450000**

## Making a payment

Did you know you can make payments for a range of the Council's services using our online payment service - have a look on our website **www.ashfield.gov.uk/pay**

Alternatively, you can call our 24 hour payment line on **08453 726173**



**www.facebook.com/  
ADCAshfield**



**www.twitter.com/  
ADCAshfield**

## Bag It!



Cllr David Martin, Cllr Jason Zadrozny and Waste Collectors

**Following its success in the Summer, Bag It! returned not once but twice this winter!**

The first of which came in November as the second Covid-19 lockdown hit the country and saw an additional 179 tonnes of waste collected across the District. The second Bag It! allowed residents to get rid of extra Christmas waste at the end of December.



## Chad Business Awards

The Council were proud to once again sponsor the Chad Business Awards in December. Congratulations to all those that were nominated for awards at the virtual ceremony, including these winners from Ashfield:

### Community Contribution award

**Let's All Eat food-bank in Sutton.** They have supported 140 families a week with food parcels across Sutton.

### Customer Service award

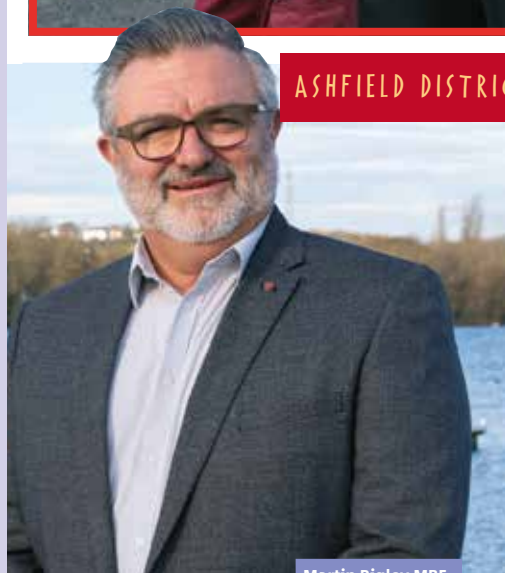
**Julie & Jess** of Kirkby based English Rose Estate Agents

### Ashfield Big Thank You award

**Ruth Lamb** for her work helping the local community.

### Lifetime Achievement award

**Discover Ashfield Chairman Martin Rigley MBE**



Martin Rigley MBE

ASHFIELD DISTRICT



# Council finalists in Public Service Excellence Awards

Ashfield District Council's Waste Team have been announced as finalists in the Best service team of the year - Waste Management & Recycling service category at the Association for Public Service Excellence awards.

The awards celebrate the best in local government and recognise the excellent work council teams deliver.

## Ashfield celebrates as six parks win Green Flag Awards

Six parks in Ashfield have once again been awarded with the Green Flag Award.

The six parks that have been awarded the Green Flag 2020 are Brierley Forest Park, Kingsway Park, Portland Park, Selston Country Park, Sutton Lawn and Titchfield Park, Hucknall.

The Green Flag was raised at each park respectively by Chairman, Cllr Andy Meakin and Vice Chairman Cllr Arnie Hankin along with other Councillors and community members.



ADC Chairman Cllr Andy Meakin, Cllr Samantha Deakin and Environment Operatives at Sutton Lawn



Cllr David Martin and Vice Chairman Cllr Arnie Hankin at Selston Country Park

Making Ashfield  
SaferAshfield  
DISTRICT COUNCIL

# COMMUNITY PROTECTION NEWS ROUND

## Town Centre Operation is a huge success

Ashfield District Council's Anti-Social Behaviour multi-agency taskforce has already seen positive results, only a few months after it was set up.

The taskforce was created in September as a response to reports of anti-social behaviour, including street drinking, from residents and shop owners in Sutton.

*Between September and November, the work of the taskforce resulted in the demolition of buildings to the back of Costa Coffee which were attracting anti-social behaviour and waste issues.*

The taskforce has issued 24 Fixed Penalty Notices for Anti-Social Behaviour (ASB) and waste, served 17 Community Protection Warnings for ASB and street drinking, served 6 Community Protection Notices and completed 16 alcohol confiscations for street drinking. It has also led to one pending conviction following the breach of a Community Protection Notice for ASB and one pending Criminal Behaviour Order following a conviction for ASB.



Cllr Samantha Deakin & Community Protection Officers

### The taskforce have issued:



Issued  
**24**

**Fixed Penalty Notices for Anti-Social Behaviour (ASB) and waste**



Served  
**17**

**Community Protection Warnings for ASB and street drinking**



Served  
**6**

**Community Protection Notices**



Completed  
**16**

**alcohol confiscations for street drinking.**



HUCKNALL

## Hucknall resident sentenced for breaching injunction order



A Hucknall resident who breached his Injunction Order has received a suspended sentence.

The resident of no fixed abode, breached their order when found at a property on Broomhill Road, Hucknall.

The resident was issued with an Anti-social Behaviour Injunction Order in May 2019 for causing high level anti-social behaviour including intimidation, victimisation, threats and ongoing abuse towards others on the Broomhill Estate in Hucknall. The Injunction Order forbids the resident from engaging in violence or making threats of violence and excludes them from entering or being on the Broomhill Estate for a period of two years.

## Council serves Prohibition Orders to Rogue Landlord

Ashfield District Council, supported by Nottinghamshire Police, served seven Emergency Prohibition Orders to one landlord in Hucknall.

The seven properties on Watnall Road, Hucknall were served the orders, meaning the properties cannot be legally occupied unless all works required are completed and the order is revoked.

Following a tip off from the power company, the Council's Private Sector Enforcement team and officers from Nottinghamshire Police attended the properties.

***Following inspection five properties were prohibited due to a lack of power and the health impacts of no heating, hot water or lighting. Two further properties were prohibited due to a dangerous external staircase which was rotting and at risk of collapse.***



HUCKNALL

Waste at the property



# Foodbank Funding

***Ashfield District Council has committed a further £3,000 of funding to support the Let's All Eat Foodbank based in Sutton-in-Ashfield.***

Following a surge in demand over 120 families across Sutton are now supported by the foodbank each week. The additional funding allows them to buy extra food and covers the fuel costs of delivering food packages across the town.

This additional funding is on top of the £15,000 of funding already provided to foodbanks across the District during the pandemic, including Engage Under One Roof in Hucknall and Kirkby Community Storehouse.

“  
Following a surge in demand over 120 families across Sutton are now supported by the foodbank each week.  
”

## Take a Tin

***Feel Good Food, a local sub group to the Ashfield Health and Wellbeing partnership has been working alongside Ashfield District Council with the Take a Tin campaign.***

The campaign encourages local residents, schools and workplaces to donate tinned goods to local foodbanks.

The campaign has been a huge success demonstrating the kindness and generosity of Ashfield residents. A large number of community groups and organisations have organised collections including Paragon



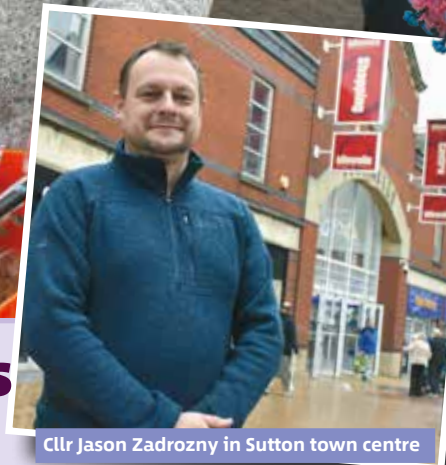
**Councillors donating food at Let's All Eat Foodbank, Sutton**

Customer Communications, Your Health Your Way, Van Elle, Idlewells Shopping Centre, Lee Glass and Glazing, Beaufort Utd Under 9's FC, Leamington Primary Academy and staff at Ashfield District Council.





Cllr Samantha Deakin helping out with deliveries at Let's All Eat foodbank in Sutton



Cllr Jason Zadrozny in Sutton town centre

## Ashfield Business Support Service

*Ashfield District Council has set up a new business support service that will help local businesses to access the full range of available support opportunities and facilitate any business to business introductions to local partners.*

It is an account management service offering a single point of contact to support local businesses with all their retention and growth needs. You can contact us through a variety of different methods: Website, LinkedIn, Email, MS Teams or Zoom Video Conferencing.



**For more information about business support, contact [business.support@ashfield.gov.uk](mailto:business.support@ashfield.gov.uk)**

# COVID Business Support



ASHFIELD  
COVID UPDATE

*Throughout the pandemic our Business Support Team has been working with businesses across the District, helping them to adapt and develop new ways of working. Here's how three Ashfield businesses have adapted their way of working...*

## SWIFTOOL PRECISION ENGINEERING (SPE), SUTTON



**With many businesses facing threats to survival during Covid19, SPE started to adapt daily practices in early February 2020.**

In order to remain fully operational as key workers within critical manufacturing supply chains, transforming operations during the fight against the coronavirus was of utmost importance.

By taking effective Covid Secure measures very early on, SPE have continued to contribute to the defence of the British Isles, the world energy markets and the health of the nation, manufacturing parts in the recent ventilator challenge. This is something that every employee is extremely proud of and also acknowledges as a privilege during such turbulent times.

Some of the practices Swiftool (SPE) adopted are:

- Masks from day one of national Lockdown in March 2020
- Daily temperature checks for all staff
- Advanced cleaning rotas & sanitising stations throughout building
- Voluntary on site Covid antibody tests
- Voluntary on site flu vaccinations for all staff, free of charge

The measures adopted were featured on the Cabinet office social media sites as examples of best practice. SPE also went on to win SME of the Year, Midlands 2020 via MAKE UK for safety in the workplace, digitalisation, and innovation. A letter from Buckingham Palace followed as part of the recognition through the Princess Royal Training Awards for services to young people and the commitment to Covid19 recovery in the local economy.

“ In order to remain fully operational as key workers within critical manufacturing supply chains, transforming operations during the fight against the coronavirus was of utmost importance. ”



**Cllr Andy Meakin  
at Twisted Tinkz**



## TWISTED TINKZ BARBERS, KIRKBY

**When the first lockdown happened and the world was brought to a standstill by the coronavirus, Twisted Tinkz barbers started looking for gaps in the market to make their shop Covid safe so they could reduce or almost stop the risk of spreading of the virus.**

They started talking to Medcover, a local firm based in Colwick about solutions to cover touched surfaces. They discovered a company called Agivir who produce membranes with antiviral surfaces for applications in public and high-traffic areas. It contains silver nitrate which kills coronavirus in 10 minutes.

Twisted Tinkz now use these on surfaces like chairs, desks and door handles to reduce their use of chemicals and risk missing areas when cleaning. This is alongside a one way system in the shop with dedicated bubble waiting areas, hand sanitiser and track and trace with every customer having their temperature taken prior to taking a seat.

As the high street evolves, and foot fall has reduced they have had to look at other alternative incomes. They are a retail outlet for Wish haircare products and have started Mining Cryptocurrency as a passive income to fill the gap of reduced capacity.

## STERASCREEN UK LTD

**COVID-19 hasn't prevented the creation of a new local company called Sterascreen Ltd.**

Owner, Chris Hawkes saw an opportunity to adapt to the needs of many businesses to create a safe working environment at low cost. He approached Ashfield District Council for help and advice and on how to access finance needed to help take his ideas to market. Chris was awarded a new business start-up grant and has moved quickly developing an innovative and sustainable Covid-19 sanitisation product.

The product not only helps keep customers, staff and visitors safe but also displays digital content that can help to remind people of health and safety policies or simply promote other services to a captive customer base. Since bringing that product to market Sterascreen has gained sole UK distribution rights for another brand new air and surface purifying and sanitising system by Radikal Health.



**Chris Hawkes, Owner of Sterascreen**

“ **Chris was awarded a new business start-up grant and has moved quickly developing an innovative and sustainable Covid-19 sanitisation product.** ”

Sterascreen is now working with local manufacturers and local authorities to install these systems to help reduce the number of employee sick days.



**For more information about business support,  
[contact business.support@ashfield.gov.uk](mailto:business.support@ashfield.gov.uk)**



# Parks & Places UPDATE

Ashfield Parks  
and Green Spaces

£1.8m

Investment  
Programme

The Council's ambitious Parks and Green Spaces Investment Programme was further expanded with **additional funding of over £300k agreed in the autumn**, to boost the total for this financial year to over **£1.8m**. The additional funding is being used to improve smaller neighbourhood sites, including additional pieces of play equipment, bins and signage, footpath works and tree planting.

## KIRKBY IN ASHFIELD



Cllr Rachel Madden and  
Cllr Daniel Williamson



Cllr Daniel Williamson at  
Titchfield Park, Kirkby

## NUNCARGATE RECREATION GROUND

The toddler area will soon be refurbished with new equipment, together with new junior and youth equipment.

These works are due for completion by the spring. Works to provide additional paths and improvements to the entrances and the BMX track are also planned to be completed by the summer.

## KIRKBY PLAY AREAS

Improvement works have been completed at **Titchfield Park, Kirkby** which included a refurbishment of the toddler area along with additional equipment for young people.

Works have started at **Skegby Road Recreation Ground in Kirkby Woodhouse**. New play equipment is being installed together with access improvements. The works are due for completion by the spring.



Cllr Rachel Madden at Skegby Road  
Recreation Ground



Cllr Warren Nuttall, Cllr Andy  
Meakin and Cllr John Baird at  
West Park

A new toddler unit is being installed at **West Park** to complement the existing play equipment. Improvements to the footpaths will be completed by the spring.

New items of play equipment have been installed at **Glen View Park** (off Warwick Close) and **Kingsway Park** providing new opportunities for play and social interaction.



Cllr Daniel Williamson at Sorrel Drive



## KIRKBY IN ASHFIELD



### NEW PARK AT SORREL DRIVE TO BE CALLED HORNBEAM PARK

The housing developer has started works on site to create a new park including footpath improvements and fencing along the railway corridor.

A Nottingham based play company has been appointed by the Council to design and install a play area, **with installation due for completion by the spring.**

Keep a look out on the Ashfield District Council and Residents' Association Facebook pages for updates including timescales for the new park being opened to the public.



## SUTTON IN ASHFIELD



Cllr Tom Hollis and Cllr Jason Zadrozny

## HUCKNALL

### TITCHFIELD PARK

Works to naturalise the brook, improve flood attenuation and enhance biodiversity will start in early 2021. Funding has now been secured for additional play equipment which will be installed on the park ready for the summer.

### BRIERLEY FOREST PARK

Improvement works are well underway at Brierley Forest Park, the iconic sculptures depicting local miners have been reproduced in stone creating a lasting memorial to the men killed in a mining accident and all those who worked at Sutton Colliery - known as 'Brierley Pit'.

Works to increase the car park capacity by 40 spaces are nearing completion along with improvements to the pedestrian entrances at The Oval, Stoneyford Road and Brand Lane.



Cllr Lee Waters at Titchfield Park, Hucknall

## NEW LEISURE CONTRACT WILL SEE HUGE IMPROVEMENTS ACROSS ASHFIELD

Ashfield District Council has successfully renewed its partnership with Everyone Active, saving £630,000 per year. Following a procurement process, Everyone Active were the successful bidder for the new contract starting 1st April 2021 and running for ten years.

***The new contract means the Council will be making a huge saving of £630,000 per year. This saving will allow the Council to make vast improvements to the District's leisure provision over the next few years.***

Major commitments include a new additional swimming facility at Hucknall, new adventure play offer at Lammas and extensions to fitness suites at both Hucknall and Lammas Leisure Centres. It will also see concessionary rates for priority groups continue and the inclusion of apprenticeships, work placements and volunteering opportunities for Ashfield residents.



Ashfield Parks  
and Green Spaces

£1.8m

Investment  
Programme

RURAL AREA



Cllr Jason Zadrozny and Cllr Samantha Deakin  
with the Sutton Environment Team

## MILL WATERS HERITAGE PROJECT

The new car park at Kings Mill Reservoir has been completed to accommodate the increasing numbers of visitors to the site. A trail has also been created through a newly planted woodland with over 500 native trees.

Opposite Kings Mill Hospital the new access gateway to the reservoir site has been completed creating an enhanced entrance to the site for patients, visitors and staff from the hospital. Level footpath access leads onto the circular routes around the site and to the facilities at the heritage centre. The centre of the area features a memorial stone to commemorate all those lost to Covid-19.

The off-road route between Sutton Lawn and Kings Mill Reservoir has been upgraded, providing a safer route for cycling and walking.



Cllr David Martin at Cromford Canal

## FORMER CROMFORD CANAL

New interpretation boards will soon be installed highlighting local walking routes around the former canal network. They will also provide detail on the area's rich historical and industrial past and identify where ruins and monuments can be viewed on the walks.



Lorenzo Clark, Everyone Active Contract Manager, Cllr Jim Blagden, Cllr Jason Zadrozny and Cllr John Wilmott at Hucknall Leisure Centre

## SUTTON IN ASHFIELD

### SUTTON PLAY AREAS

Works to improve **Riley Recreation Ground** will be completed soon. The works involve the installation of a new multi-climb play unit and additional equipment for toddlers.



Cllr Tom Hollis at Riley Recreation Ground

Initial ideas to revitalise **Huthwaite Welfare Park** are being prepared to share through a public consultation early in 2021. Improvements to the park are due to start on site in the summer.



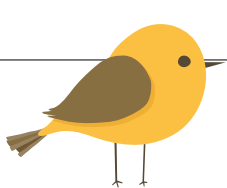
Cllr Helen-Ann Smith at Healdswood Recreation Ground

The toddler area at **Healdswood Recreation Ground** is to be refurbished and repainted. New youth equipment will be installed to complement the existing equipment. These works are due for completion by the spring.



Cllr Tom Hollis at Huthwaite Welfare Park





# Towns fund



Artists impression of Kirkby Town Centre Plaza with new Cafe

**As part of the Towns Fund, Kirkby and Sutton could receive up to £25m each to fund plans to create thriving and revitalised town centres, with a wide range of services and retail offer, a vibrant night-time economy and enhanced leisure offer.**

A range of projects have been developed across the District for new housing, better education and leisure facilities, and to support and grow the area's visitor economy. Projects include:

- At Fox Street we will be redeveloping the derelict plot of land behind Lloyds bank to provide better access between ASDA and Portland Square, additional car parking and a place for pop-up events.
- On Low Street we will be purchasing vacant units and renovating them for a variety of new uses on the ground floor and residential apartments above.
- We are working with the Sutton Community Academy on a major renovation of their theatre so that it becomes a new public facing community theatre and cinema.
- A Maker Space that will offer access to tools and work spaces so that those lacking the space or funds at home will be able to make anything they like.
- We are working with Inspire, Sutton Community Academy and Vision West Notts on a new joint construction skills centre. We are also working with Vision West Notts on a new civil engineering education centre.
- At the northern end of Outram Street we will have a new fund that will purchase vacant shops and develop good quality residential conversions.
- Around Kirkby station we are planning a new gateway building with a business hub, transport interchange and to the south, start up industrial units.







- In Kirkby town centre pedestrianised area we are converting three vacant units into a new indoor market. On the plaza we will be building a new café and coffee shop and across Ellis street a new landmark building will provide apartments and space for business and health uses.
- At Sutton Lawn and Kingsway Park we will be further expanding these sports hubs with better facilities.
- At Kings Mill Reservoir we are developing a new leisure offering that will enable more people to experience water sports activities and the beauty of the reservoir.
- We will be helping support the exciting plans at the Sherwood Observatory to build a new planetarium.



Cllr Matthew Relf and Cllr Samantha Deakin in Sutton town centre

## Help with developing skills...

**In addition to all of these physical projects we are also working on a raft of programmes focussed on helping people and businesses in the area with developing skills.**

These range from helping tech novices to start using the Internet, to helping businesses to develop their online presence so they can access new markets, through to helping people in the maker space and new training centres to learn a new skill.



Artists impression of Sutton Academy Theatre

# CHRISTMAS IN ASHFIELD

*Ashfield's Christmas lighting displays delivered Christmas cheer throughout the District, despite the pandemic. As the annual Christmas festivals were unable to go ahead; the Council brought the magic into the town centres a little earlier with lights, trees and 3D features.*



Cllr Daniel Williamson, Cllr Rachael Blazewicz-Bell and Environment Officers at Annesley Tree

## ANNESLEY HAS WELCOMED A BRAND NEW CHRISTMAS TREE FOR 2020!

The tree has been planted thanks to collaborative working between Ashfield District Council and Annesley and Felley Parish Council.

The 15-foot Nordmann Fir has been safely planted by Ashfield District Council's Environment Team in its new home on the junction of Annesley Cutting and Newstead Road. It now stands alongside the Annesley 'A' sculpture and the headstock wheel of Annesley Colliery.

The cost of the new tree has been covered by Annesley and Felley Parish Council, following a decision to remove the previous tree that hadn't matured.



Cllr Andy Meakin with ADC employees

## EMPLOYEE CHRISTMAS GIFT APPEAL

This year's Christmas appeal focused on bringing joy to the residents of two Ashfield care homes - Kingfisher Court in Sutton and Beaumont House in Hucknall.

Ashfield District Council employees provided personalised gifts for the residents, as well as donating to families who use our community foodbanks and those living with Dementia.

*The new penguins in Kirkby proved to be a big hit along with Charlie the Polar Bear in Hucknall and the Giant Snowman who took his place on Portland Square in Sutton.*



# Kirkby Leisure Centre

*Construction work has begun on Kirkby's new leisure centre.*



Artists impressions of the new Leisure Centre



**Work is underway on site following the signing of a build contract with Kier with the new facility expected to open in the first half of 2022.**

Festival Hall will then be demolished and replaced by improved parking including electric car charging points and secure cycle storage points.

The leisure centre will bring state-of-the-art facilities to Kirkby including multi use hall space, fitness classrooms, fitness suites and a swimming pool. Interpretation boards have been installed along Lindleys Lane perimeter of the site, along with two sets of viewing windows so residents can keep an eye on the progress of the build.



Cllr Andy Meakin with the interpretation boards



Cllr Jason Zadrozny, Cllr Andy Meakin and Cllr Daniel Williamson with ADC Officers and partners at the start of work on site.

# Scrutiny Update

by Councillor David Shaw



“Overview and Scrutiny is vital in ensuring the Council is accountable for its decisions and as chair I feel it's my job to ensure a positive outcome for the people of Ashfield.

We have recently been looking at support measures the Council has in place for veterans, service personnel, and their families and how the Council works with local charity and voluntary organisations to enhance this support. Through this we have been able to gain a better understanding of the key issues veterans and service personnel face, and any gaps in support the Council can work to fill.

As a result, we are looking to expand the e-learning modules regarding the Armed Forces Covenant, develop a robust and purposeful Reservist Policy, commit to achieving the Gold Standard Award through the Defence Employer Recognition Scheme and much more.

This work is a trailblazer within Nottinghamshire and it has been a great topic to chair. I have met remotely with ex-service champions who are a much needed link between the Council and our veterans.

Our next topic on Homelessness will benefit even more people. We will become one of the first authorities to challenge the way we respond to the needs of ex-service personnel who present as homeless, without benefits or needing medical services.

It's a privilege to do this work and together with our teams in Legal, Environment, Housing and Governance, we can achieve even more for Ashfield residents.”

**Councillor David Shaw**

Hucknall Councillor and  
Chairman of Scrutiny Panel A

## **Overview and Scrutiny plays an important role in the Council decision making process.**

Our Scrutiny panels review decisions made by members of the Council's Cabinet and make recommendations to ensure that the people of Ashfield get the best out of their public services.

Councillor David Shaw, Hucknall Councillor and Chairman of Scrutiny Panel A, talks us through the process and what's currently on the agenda.





Making Ashfield a cleaner place to live, work and visit.

## THE **BIG** ASHFIELD SPRING CLEAN

# Returning for its fourth year!

*The campaign will allow all residents the opportunity to dispose of their excess waste through kerb side collections and free bulky waste collections.*

Starting in Hucknall on 8th February, the campaign will roll out across the District over three weeks. Residents are invited to leave extra bagged waste with their bin collections and will also be able to book a free bulky waste collection where we will collect up to three items from their homes.



2021 dates

**Week of 8 Feb Hucknall**

**Week of 15 Feb Kirkby & Rurals**

**Week of 22 Feb Sutton**

Free bulky waste collections can be booked between **Monday 8th and Friday 26th February.**

Visit **[www.ashfield.gov.uk/springclean](http://www.ashfield.gov.uk/springclean)** for more information.





# New Council Houses for Ashfield

*Derelict sites and grot spots across the District are being targeted for redevelopment to benefit the local community.*

As part of its commitment to help tackle the housing shortage, the Council is developing new council homes on a number of sites.

- **Davies Avenue, Sutton in Ashfield** - a development of 22 family homes and bungalows being developed with EM Homes on the site of the former Sutton Town Social Club.
- **Hucknall garage sites** - social housing is planned for four under used garage sites in Hucknall.
- **Stoney Street, Sutton in Ashfield** - plans are in place to transform an under used car park on Stoney Street with five new family homes. In addition, much needed adapted bungalows are planned for two under-utilised community centres at The Beeches, Skegby and The Poplars, Sutton in Ashfield.
- **Maun Valley, Sutton in Ashfield** - a proposed development of 18 new homes on unused land near the Maun Valley Industrial Estate.

Cllr Lee Waters, Cllr Dave Shaw and Cllr John Wilmott at Barbara Square Garages where five family homes are planned



Cllr Tom Hollis and Paul Parkinson at Maun Valley which will become 18 new homes

“ In the current climate the demand for social housing is increasing, with family houses rarely becoming available. We want to ensure that we can offer affordable housing to as many people on the housing register as possible. ”

- *Plans for Hawthorn Avenue garage site in Hucknall will see two new family homes.*
- *Wasteland on Davies Avenue in Sutton will see 22 new family homes.*
- *Five new family homes are planned for a derelict car park on Stoney Street, Sutton.*
- *Chatsworth Drive garage site has plans for a block of four maisonettes, in-keeping with the current street scene.*
- *The Beeches in Skegby will be transformed into two new bungalows.*



Cllr Samantha Deakin at the Beeches where two new bungalows will be built



Plans for the garage site at Chestnut Grove, Hucknall include four family homes

***All these plans will bring a total of 64 new council homes to Ashfield!***

# Cracking Down on Environmental Crime

Since April 2020, Ashfield District Council has...



Cllr Helen Ann Smith

Councillor Helen Ann Smith,  
Deputy Leader of the Council said:

“ Since I became portfolio holder of Community Safety, our main priority has been cleaning up the District and cracking down on those who blight our communities. Here's a snapshot of the enforcement action we've taken this year. ”

**7** Convicted for Breach of Community Protection Notice specifically for Waste on land/accumulation

Breach of  
Community  
Protection  
Notice

**238**

warning letters sent before  
action for messy gardens





Served

89

Community Protection  
Warning's relating  
to waste on land/  
accumulation

Served

87

Prevention of  
Damage by Pests  
Act Notices

19

further waste notices  
relating to filthy or  
verminous residential  
properties.

Fixed  
Penalty  
Notice

Issued

51

Fixed Penalty Notices specifically  
relating to waste and littering  
offences/breaches

13

properties  
prohibited that  
were squalid and  
waste filled

Served

32

Community Protection  
Notices relating to waste  
on land/accumulation

Community  
Protection  
Notices

Issued

18

formal Tenancy  
Warnings for messy  
gardens (ADC  
Property)

Thank you for continuing to  
support our local independent  
retailers.

shop small, shop safe



Cllr David Martin at Sauce & Brown  
Annesley



Cllr Dave Shaw & Cllr John Wilmott at Halo Hair  
Hucknall



Cllr Samantha Deakin at Geoff Webster  
Idlewells Indoor Market Sutton



# Useful contact details...

*Our offices at Urban Road (Kirkby), Brook Street (Sutton) and Watnall Road (Hucknall) are now open on an appointment only basis.*

If you cannot resolve your query or access a service online or over the telephone. Appointments are needed to limit the number of customers at a time to comply with COVID-safe requirements.



**ADC Switchboard**  
t: 01623 450000



**Democratic Services**  
e: democratic.services@ashfield.gov.uk  
t: 01623 457232



**Duty Planner**  
e: dutyplanner@ashfield.gov.uk  
t: 01623 457388



**Elections**  
e: regelec@ashfield.gov.uk



**Environment and Waste**  
e: environment@ashfield.gov.uk  
t: 0800 183 8484



**Cemeteries**  
e: cemeteries@ashfield.gov.uk  
t: 01623 457462



**Anti-Social Behaviour**  
e: asb@ashfield.gov.uk  
t: 01623 450000



**Lost/Stray Dogs**  
t: 01623 457345



**Private Sector Enforcement (Housing)**  
e: privatesectorenforcement@ashfield.gov.uk  
t: 01623 457345



**Revenues**  
e: revenues@ashfield.gov.uk  
t: 01623 457400



**Housing Lettings**  
e: homefinder@ashfield.gov.uk  
t: 01623 608 888, option 4



**Housing Repairs**  
e: adcrepairs@ashfield.gov.uk  
t: 01623 457999



**Housing Tenancy**  
e: tenancy@ashfield.gov.uk  
t: 01623 608 888 (option 3)



**Housing Rents**  
e: income@ashfield.gov.uk  
t: 01623 608888 (option 2)



**Homelessness Services**  
e: housingoptions@ashfield.gov.uk  
t: 01623 457 252



**Lifeline Services**  
e: lifeline@ashfield.gov.uk

## Follow us on social media!

*You can also keep up to date with all things Ashfield District Council on our social media channels.*

Follow us for news updates, job adverts, events, competitions, meetings and more! Our direct messaging inbox is open to for all your enquiries.

[www.ashfield.gov.uk](http://www.ashfield.gov.uk)



**Ashfield District Council**



**@ADCashfield**



# As well as two hours free town centre parking, you can now pay to park with **PayByPhone**

- ✓ No need for cash or to touch Pay & Display machines
- ✓ No need to queue
- ✓ Receive a reminder before your parking expires
- ✓ Extend your parking session from anywhere

**Download our app today!**



For more info please visit:  
[paybyphone.co.uk/Ashfield](http://paybyphone.co.uk/Ashfield)

