

SPRING 2022

Ashfield **MATTERS**



£22.5m Leisure Transformation Underway

IT'S BACK!

THE
BIG

INSIDE:

**Safer
Streets**

PAGE 8-9

**Business
Support**

PAGE 10-11

**New Council
Homes**

PAGE 25

**ASHFIELD
SPRING
Clean**

2022

FREE BULKY WASTE COLLECTIONS

See inside
for details

24 hour Emergency help, at the touch of a button

For more information:

- Call: **01623 450 000**
(option 1, option 5)
- Email: lifeline@ashfield.gov.uk
- Visit our website at: www.ashfield.gov.uk/lifeline
where you can fill in an online application.



**Your local Lifeline
provider with over
25 years' experience**

Do you know someone
with a vulnerability or
illness that leaves them
feeling insecure?

Our Lifeline service
provides personal support
and reassurance to
enable people to stay
independent at home.

- **Dependable**
- **Easy to use**
- **Straight through
to operator**
- **24 hour service**
- **Free repair and
replacement service**



FROM **£3.93**
ONLY PER WEEK

Competitive one-off
set-up charge of: **£12.23**

BUSINESSES - DO YOU NEED A RELIABLE, COST EFFECTIVE TRADE WASTE SERVICE?

We offer a top quality, reliable trade waste collection
to businesses in Ashfield, at very competitive prices.



Find out more at: [www.ashfield.gov.uk/
environment-health/bins-waste-recycling/
commercial-trade-waste](http://www.ashfield.gov.uk/environment-health/bins-waste-recycling/commercial-trade-waste) or by calling: **0800 183 84 84**



Cllr Jason Zadrozny, Leader of the Council

Welcome...

to your latest edition of **Ashfield Matters** – your guide to what the Council is doing across the District.

The BIG news is that the BIG Ashfield Spring Clean is back and better than ever for spring 2022. Following resident feedback, we are changing things to improve the service for everyone including a new way to take advantage of the free bulky waste collection.

You'll find all the details on pages 13-15.

Following the news last year that **£550,000 in Safer Streets Funding had been successfully secured by Ashfield District Council and partners, several safety enhancements have been made** to the New Cross area of Sutton. Full details of these can be found on pages 8-9.

We have a Towns and Future High Streets Fund update on pages 16-17 which outlines some of the exciting projects which will transform Kirkby and Sutton using the **£70million of funding we secured from the government.**

Our ambitious **£22.5million leisure transformation programme** is almost complete as Kirkby Leisure Centre gets closer to opening to the public this summer. We opened the impressive new TAGactive arena, and refurbished ice rink at Lammas Leisure Centre, along with state of the art gyms at both Hucknall and Lammas Leisure Centres earlier this year. You can read the full details on pages 20-22.

We have made fantastic progress with our plan to build new Council homes across the District, with more homes being completed in Sutton and Hucknall. In Kirkby, Warwick Close has been given the green light for redevelopment. You can find out more on page 25.

I hope you enjoy this issue and don't forget to let me know if you have any comments you'd like to make.

Cllr Jason Zadrozny, Leader
Ashfield District Council



All about us

Ashfield Matters is produced by Ashfield District Council's Communications Team.

The magazine is delivered to every household in the District.

Katherine Green, **01623 457 307**
Corpcomms@ashfield.gov.uk

If you require assistance with this document or would like it in a different format, please contact Customer Services on **01623 450 000**

Contact us

You can contact Ashfield District Council in a number of ways.

Web: www.ashfield.gov.uk
Tel: **01623 450 000**
Fax: **01623 457 585**
Email: info@ashfield.gov.uk
Typetalk: **18001**
01623 450 000

Making a payment

Did you know you can make payments for a range of the Council's services using our online payment service - have a look on our website www.ashfield.gov.uk/pay

Alternatively, you can call our 24 hour payment line on **08453 726 173**

 www.facebook.com/ADCashfield

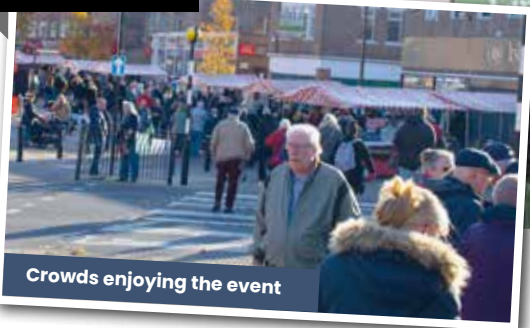
 www.twitter.com/ADCashfield

Hucknall Food and Drink Festival

Following the huge success of the first ever Food and Drink Festival in Hucknall in August 2021, Ashfield District Council repeated the success with another festival on Sunday 21st November.

Over 3,000 people attended the event in November to enjoy the delicious range of products on offer from the 25 traders. Planning is already underway for the next Ashfield Food and Drink Festival in Hucknall for August 2022!

HUCKNALL



Crowds enjoying the event



Follow @Hucknallfoodfest on Facebook for more information

ASHFIELD DISTRICT



Cllr Tom Hollis, Gillian Welch; the Armed Forces Covenant Lead Officer, Theresa Hodgkinson; CEO of the Council, and Cllr Jason Zadrozny at the awards ceremony

Gold Award for outstanding Armed Forces Support

Ashfield District Council collected the Gold Employer Scheme award at the Royal Armouries in Leeds.

Representing the highest possible badge of honour, Employer Recognition Scheme Gold Awards are awarded to those that employ and support those who serve, veterans and their families.

New electric vehicle trial



As part of the Council's commitment to transition to a fleet of electric vehicles, a new electric refuse lorry was trialled to sit alongside the two electric and three hybrid vehicles the Environment team already use.

ASHFIELD DISTRICT



Cllr Jason Zadrozny with the electric refuse lorry

The Environment team are currently trialling two new electric street cleaning vehicles, which allow the team to carry out precise spot cleaning of pavements with a jet washer and mini sweeper. The jet washing vehicle even deodorises the streets leaving a fresh scent behind! This is another example of the Council delivering services whilst doing our bit to combat climate change.



Alastair Blunkett; Service Manager for Neighbourhoods and Environment, and Cllr Samantha Deakin with the mini sweeper



Cllr John Wilmott, Cllr Jim Blagden with Anthony Hughes of Lincoln Green Brewing Company

Six parks in Ashfield win Green Flag Awards



Six parks in Ashfield have once again been re-awarded with the Green Flag Award.

The six parks that have been awarded the Green Flag 2021/22 are Brierley Forest Park, Kingsway Park, Portland Park, Selston Country Park, Sutton Lawn, and Titchfield Park, Hucknall.

ASHFIELD DISTRICT



Council operatives with Vice Chairman of Ashfield District Council, Cllr John Smalridge, at Brierley Forest Park

ASHFIELD DISTRICT

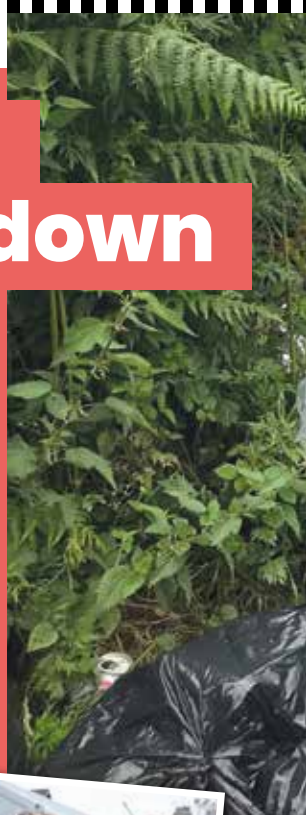
Ashfield District Council clamps down on fly tipping

Ashfield District Council has seen a huge 20% reduction in fly tipping reports in 2021.

In December, the Department for Environment, Food and Rural Affairs reported that there had been a 16% increase nationwide in reported fly tipping during the pandemic.

Ashfield District Council has bucked that trend, with a 20% reduction in fly tipping reports received in 2021 compared with 2020.

The Council's Community Safety Team made significant efforts to curtail fly tipping in the District which resulted in 545 fly tipping investigations with 88 fines issued under the Environmental Protection Act 1990 since April 2021. The highest recorded amount in the Council's history.



SUTTON IN ASHFIELD

Sutton resident given an Anti-Social Behaviour Injunction Order

The resident, of Willow Crescent, received an Anti-Social Behaviour Injunction Order for subjecting other residents and Council Officers to high levels of abuse including threats of violence, aggression and continuing to play loud music from his property.

The Injunction prohibits the resident from entering or remaining in the Ashfield District Council offices unless agreed by an employee of the Council; and from committing violence or making threats of violence (either directly or indirectly) including threats to kill, threats to blow up and threats to cause damage.



Cllr Helen-Ann Smith, Cabinet Member for Community Safety



20%

reduction in fly tipping reports received in 2021 compared with 2020

Fly tipped waste on Derby Road

KIRKBY IN ASHFIELD

Three Kirkby residents receive Anti-Social Behaviour Injunctions

The Council's Community Safety Team obtained three Anti-Social Behaviour Injunction Orders against three residents, all of Poplar Avenue, Kirkby.

The residents were causing significant issues within the area of Poplar Avenue, Kirkby, involving abuse, aggressive behaviour, playing of loud music, deliberately making noise, and rubbish dumping.

The Anti-Social Behaviour Injunctions will remain in place until November 2022 and forbid the residents from having visitors between 6pm and 9am, playing loud music, deliberately making noise and from abusing Council officers.



Safer Streets

In the autumn Ashfield District Council, along with its partners was successful in a bid for £550,000 of funding from the Safer Streets fund. The funding is being used to tackle ongoing problems in the New Cross area, as well as the wider area of Sutton.

Street Lighting



Ashfield District Council Community Protection Officer reviewing street lighting

Work is underway to install new street lighting in Sutton. £70,000 is being invested in street lighting in target areas in the Town Centre and £15,000 for enhanced street lighting along routes used by school children.

A network of new and upgraded CCTV and refuge cameras to protect women and automated number plate technology (ANPR) cameras to detect crime are also being put in place.

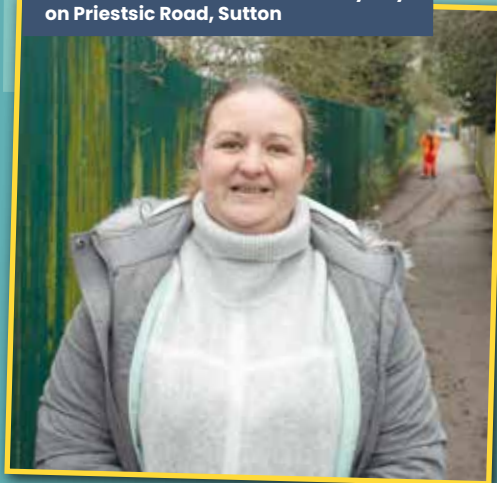
Alleyway Clearance

An alleyway between Outram Street and Priestsic Road, Sutton, which is popular with people walking to and from Priestsic School was cleared of overgrown trees and shrubs.

The overgrown shrubs and trees were not only hindering the walkway but reduced the effectiveness of the streetlights.

Reports from residents told us that, particularly when walking alone, they didn't feel safe walking through the alleyway.

Cllr Samantha Deakin at the alleyway on Priestsic Road, Sutton





Safety App Trial

A pioneering trial, being managed by Ashfield District Council, is underway to test the effectiveness of a series of smart phone safety apps to help protect women and girls out and about on the streets of Sutton-in-Ashfield.

The apps provide varying features from enabling users to make a voice or touch-activated SOS call to live streaming when a call for help is made through to fake calls.

Six apps are being trialled by female volunteers. The strongest-performing app will then be subject to a further trial involving local women over a two-month period for full evaluation. Further updates on the trial will follow.

Gating Order

A passageway, which runs between Bentinck and Welbeck Street, Sutton, has been gated off as part of a Public Spaces Protection Order (PSPO) imposed by the Council.

New gates worth £5,000 have been installed to secure the area, and are designed to limit access to passageways to prevent crime and reduce the vulnerability of those who use them.



Cllr Helen-Ann Smith, Cllr Samantha Deakin, Antonio Taylor, Louise Robinson and Wayne Bennett from the Ashfield District Council Community Protection team

Ashfield District Council supports local businesses

Clr Matthew Relf presenting at the business breakfast

Case Study | HYGEAR

Ashfield District Council's Business Support team has had a role to play in accelerating access to ground-breaking medical technology.



Adesola Akindele, London Noble and Adebisi Oladipupo, owners of Hygear

Hygear Technologies are taking disinfection to a whole new level with their innovative, non toxic solutions as an added layer of defense to help tackle community hygiene challenges.

The business model has been developed thanks to its three co-owners Adesola Akindele, London Noble and Adebisi Oladipupo.

The Council's Business Support team was approached by Adesola when they were exploring relocation opportunities to move to the east midlands from US. Hygear instantly saw progress through the officers at Ashfield District Council with connections made to local manufacturers and industry representatives.

Adesola and her partners were keen to bring their business to the East Midlands thanks to its excellent transport links and technological aspirations. Hygear have been continuing to work with the business support team to put plans in place to bring their head offices to Ashfield.

Business Breakfasts

Ashfield District Council welcomed business leaders from across the District to its business breakfast event.

The networking event, the first to be held since the pandemic, saw over 30 local business leaders come together to hear speakers from the Life Sciences business sector.

This was the first in a series of breakfast events that will be held by the Council to support local business leaders.

Follow the Business Support Team on Facebook and LinkedIn by searching Succeed in Ashfield.

Alistair Campbell, Director,
SureScreen and Cllr Matthew Relf



“
If it wasn't for the
assistance of the team at
Ashfield we wouldn't be
where we are today.”

Case Study | SURESCREEN

Established in 1996 SureScreen have been providing diagnostic lateral flow tests long before Covid-19 was a part of our lives.

Before the pandemic they were delivering diagnostic testing to a number of industries including drug testing for prisons and health screening for the NHS.

When the pandemic hit they took their knowledge and skills from years of experience to develop and manufacture lateral flow tests for Covid-19. Growing from two to 11 sites in just 18 months, SureScreen contacted Ashfield District Council's Business Support Team to help them find new premises in Ashfield.

Working with the team they moved into their new premises on Sherwood Business Park in the Autumn. Winning a government contract to produce millions of antigen tests, they are using automation to develop more efficient ways of working.

They now have over 500 staff working across the 11 sites and further expansion is planned, with one of their sister companies looking to also move into the District.

**Take your business to
the next level with
support from Ashfield**

District Council...

You can contact the
Business Support team at:
business.support@ashfield.gov.uk

in : Succeed in Ashfield

f : Succeed in Ashfield



Ashfield's historical figures come to life...



Claire Finn as Ada Lovelace

As part of the Ashfield Art Trail, Ashfield District Council in partnership with Discover Ashfield commissioned talented residents to create a series of short films about historical figures from Ashfield's past.

Creator of Ashfield Art Fest 2021, Claire Finn, was heavily involved in the project acting as the script writer, producer and star of the Ada Lovelace film. The videos, filmed by Ashfield videographer Tom Cable, offer a unique glimpse into Ashfield's past. You can watch the films and listen to the stories told by William Duke of Portland, Ada Lovelace, and a Medieval Kirkby local.

At least five more films are currently in production and will be released in the

coming months featuring more hidden figures from the District's surprising history.

The films can be viewed by scanning the QR codes on the boards displayed at Mill Waters Café at Kings Mill Reservoir, next to the Ada Lovelace plaque on Hucknall High Street, and Kirkby Plaza. You can also search Ashfield District Council on Youtube to watch the films.

Scan to watch
Ashfield's
History come
to life





We are rolling out The BIG Ashfield Spring Clean across the District for the fifth year as part of the Council's commitment to make Ashfield a cleaner place to live, work and visit.

Residents are invited to get rid of ONE extra bag of household waste during their designated week.

On top of this Flying Skips will be out and about across the District for you to dispose of extra waste, bulky items, toys and furniture.

We'll be inviting local schools and volunteers to get involved in litter picks in their communities. We are also launching our new **FREE** bulky waste collection scheme.

Turn over for full details...



STARTING 21ST MARCH 2022

THE BIG

ASHFIELD SPRING CLEAN 2022



Your extra bag of waste should be put out on your regular bin collection day during the following weeks...

| | |
|---------------------|---|
| w/c 21st March 2022 | Kirkby, Annesley, Nuncargate, Selston, Jacksdale, Underwood, Westwood, Bagthorpe, Brinsley, Pinxton |
| w/c 28th March 2022 | Hucknall, Bestwood Village, Linby, Papplewick |
| w/c 4th April 2022 | Sutton, Huthwaite, Stanton Hill, Teversal, Tibshelf, Skegby, Harlow Wood, Mansfield |

Your bag and bin may be collected by separate lorries so please ensure both are presented by 6:00am. As long as it is in a bin liner and doesn't contain hazardous material, liquids or electrical goods we will collect it!

If you'd like to get involved with the BIG Ashfield Spring Clean contact us at volunteering@ashfield.gov.uk

FLYING SKIPS

Flying Skips will be out and about across the District on the Saturdays listed below. Bring along your excess and bulky waste, toys and furniture.

To find out locations and times scan the QR code or visit: www.ashfield.gov.uk/springclean



| | |
|---------------------|---|
| Saturday 19th March | Kirkby, Annesley, Selston, Jacksdale, Underwood, Westwood, Brinsley |
| Saturday 26th March | Hucknall, Bestwood Village |
| Saturday 2nd April | Sutton, Huthwaite, Stanton Hill, Teversal, Skegby |



For full details of the BIG Ashfield Spring Clean visit www.ashfield.gov.uk

CUT OUT AND KEEP GUIDE

FREE BULKY WASTE COLLECTIONS



The way we offer free bulky waste collections is changing. We are now offering ONE free bulky waste collection of up to three items each calendar year from 1st April to 31st March. Residents will be able to book a free collection based on where they live.

The new scheme starts in April with Kirkby & the Rurals, moving to Hucknall in May and Sutton in June. The rotation then starts

again, giving all residents four months of the year when they can book their **FREE** bulky waste collection.

| Kirkby and the Rurals | Hucknall | Sutton |
|---|---|---|
| Kirkby, Annesley, Nuncargate, Selston, Jacksdale, Underwood, Westwood, Bagthorpe, Brinsley, Pinxton | Hucknall, Bestwood Village, Linby, Papplewick | Sutton, Huthwaite, Stanton Hill, Teversal, Tibshelf, Skegby, Harlow Wood, Mansfield |
| Kirkby and the Rurals | April, July, October, January | |
| Hucknall | May, August, November, February | |
| Sutton | June, September, December, March | |

Bookings can be made up to 2 weeks before the collection month and collections must be made during the month stated for the area you live in. Bulky collections will still be available to residents at other times, with a new price of £20 for up to 3 items.

Full details on how to book can be found at: www.ashfield.gov.uk/bulkywaste

www.ashfield.gov.uk/springclean and check our social media pages for updates.

Towns Fund

Work continues to progress on the Town Investment Programme following confirmation of over £70m of government funding to transform Kirkby and Sutton.

Plans are also being worked up for a future funding bid for Hucknall, as part of the Council's plans to revitalise the three town centres in the District.



Portland Square



Artist's impression of Portland Square, Sutton

Work is underway to review the street furniture in the town centre. A new style has been selected to improve the look and feel of the area which will complement wider plans to refurbish Portland Square in 2022.

Plans to redevelop the vacant Fox Street site between Lloyds Bank and ASDA are progressing following the appointment of the architect and design team.

Walking and Cycling are taking the next steps..

Planning approval has been secured and construction work is now underway to upgrade the routes between Kirkby and Sherwood Business Park with works planned for completion in the spring.

Sutton Academy



Artists impression of the theatre at Sutton Academy

The project to upgrade the theatre at Sutton Academy and open it to the public is progressing with the architect and design team due to be appointed to produce the initial design plans.



Update



Cllr Jason Zadrozny outside High Pavement, which will be redeveloped into the Maker Space

Maker Space

Following the purchase of 70-78 High Pavement in September, detailed designs are being developed to remodel parts of the building to accommodate a new Maker Space on the ground floor and high quality office space on the first floor.

The construction work is planned for the spring and summer with units due to be available in late summer/autumn.

All enquiries for office space to:
commercialproperty@ashfield.gov.uk

Sutton Town Centre

The transformation of the high street is progressing following the purchase of the former Yorkshire Bank building and 9-11 Low Street on the opposite side of the street.

Plans have been submitted to secure planning approval to renovate the ground floor for new commercial units and to create two high quality flats on the first floor. The construction work to the properties will commence in the spring.

For enquires on the commercial units contact: commercialproperty@ashfield.gov.uk

**A place to work
on your own projects and
bring concepts to reality...**



The Maker Space will create a place to meet people, learn, socialise, and collaborate on projects.



If you're interested in supporting the Maker Space project, we are keen to hear from you. Please get in touch via place@ashfield.gov.uk

Derelict sites brought back to life

Ashfield District Council continues to ensure the dilapidated and empty properties across the District are redeveloped, made safe and are less of a blight on our communities.

Working with the owners of the buildings, our results include improvement works to the exteriors of buildings, redevelopment, forced sales and conversions into housing or retail space.

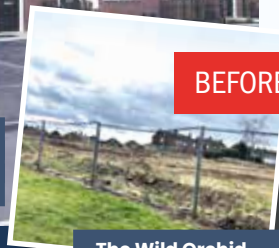
Wild Orchid, Southwell Lane | Kirkby

AFTER



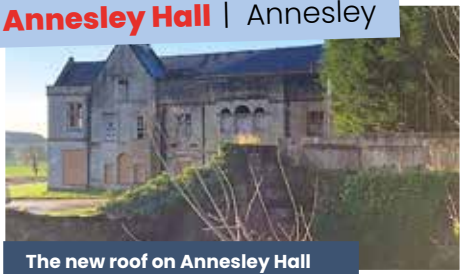
Former Wild Orchid site following redevelopment

BEFORE



The Wild Orchid site before redevelopment

Annesley Hall | Annesley



The new roof on Annesley Hall

The Council is working closely with the owners of Annesley Hall on its restoration.

The roof of the Grade 2 listed country house is being replaced and close to completion, following two previous fires. This is a significant step in bringing the listed building back to life.

The public house located on the site was demolished in 2008. Despite a number of planning applications being submitted for the site, it was becoming overgrown, neglected and a source of concern for local residents.

In September 2018 the Council were looking at all brown field sites and wrote to the owners offering help to move redevelopment of the site forward. Following the sale of the site the new owner gained planning permission for 12 new homes. The development is now complete bringing significant improvements to the area.

Middlebrook Road | Underwood

The former Co-Op store had been empty for over 10 years. The Council started talks with the owners following complaints from neighbouring properties, and were asked to tidy up the site.

A local property developer contacted the Council about purchasing the building with a view to converting it into housing. Following the sale, planning permission was applied for and granted and work has begun to convert the building into a family home.

AFTER



Middlebrook Road, Underwood following redevelopment

BEFORE



Middlebrook Road, Underwood before redevelopment

Annesley Miners Welfare | Annesley



Cllr Rachel Madden at Annesley Miners Welfare before redevelopment

BEFORE

The old Miners Welfare club closed in 2019 and a major fire in 2016 destroyed half the building.

The Council worked with developers on a sustainable scheme that saw the original building demolished and new housing being built. The development of 45 homes is now well underway, with the design of the houses facing Derby Road being sympathetic to the old cottages in the area.

AFTER



The Annesley Miners Welfare site following redevelopment

£22.5m Leisure Transformation Underway

Ashfield District Council is investing £22.5million in its leisure centres, making them some of the best in the area.

Hucknall and Lammas have both seen major redevelopment and are now home to state of the art equipment and facilities. There is more to come at Hucknall with a second swimming pool planned, and with the new Kirkby Leisure Centre set to open this summer, Ashfield is leading the way with its leisure facilities.

Hucknall Leisure Centre

Exciting advances are happening at the Hucknall Leisure Centre swimming pool following the news in December that the £2.7million teaching pool was given the green light by Ashfield District Council

Swimmers are now able to take advantage of the brand new wetside changing village which features different-sized areas to accommodate multiple users, such as single and family-sized cubicles.

Hucknall Leisure Centre has also undergone many impressive upgrades, including a new 120-station gym and fitness suite, studios and the refurbished reception, which have transformed the leisure centre over the past year.



The new Hucknall Leisure Centre gym

“the **£2.7million** teaching pool was given the green light by Ashfield District Council”

Lorenzo Clark, Contracts Manager at Everyone Active, with Cllr Jason Zadrozny at the new TAGactive arena

Lammas Leisure Centre

Lammas launched its innovative TAGactive Arena in January alongside a new soft play area for juniors and toddlers.

TAGactive is a high intensity obstacle course for all ages that challenges participants to compete against themselves or their friends by tapping the various tag points throughout the arena.

Residents were invited to get their skates on after the ice rink at Lammas Leisure Centre reopened in January

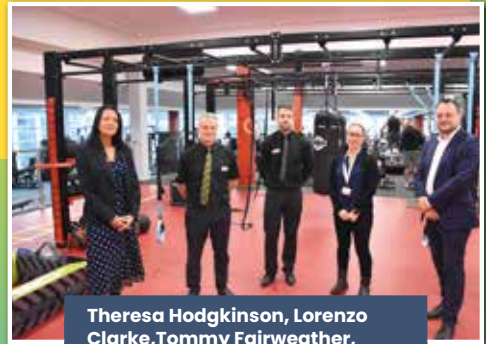
following the completion of the substantial improvement works.

The exciting developments include new flooring, a new ice refrigeration plant, new seating and a new serving hatch which allows access to the café.

A new group cycling studio, the refurbishment of the café and reception, and the world class fitness suite complete the £2million improvements to Lammas Leisure Centre.



Lorenzo Clark, Contracts Manager at Everyone Active, with Cllr Jason Zadrozny at the Lammas ice rink



Theresa Hodgkinson, Lorenzo Clarke, Tommy Fairweather, Andrea Stone and Cllr Jason Zadrozny at Lammas gym

Cllr Jason Zadrozny, Cllr Rachel Madden, Cllr Matthew Relf, Cllr John Wilmott, Cllr Samantha Deakin and Theresa Hodgkinson, Ashfield District Council Chief Executive with officers from Kier



Kirkby Leisure Centre

Work on the new Kirkby Leisure Centre is progressing rapidly with plans to open this summer.

In December the concrete foundations for the 25m swimming pool and splash pad were laid, all internal partitions have been erected, including the walls for the impressive sports hall. The new £15.5m leisure centre will feature a gym, sports hall, indoor cycling studio, climbing wall, inclusive spaces as well as Kirkby's first large swimming pool.



Artist's impression of Kirkby Leisure Centre swimming pool

“ the new
£15.5m
leisure centre will feature
a gym, sports hall, indoor
cycling studio,
climbing wall... ”



Artists impression of Kirkby Leisure Centre

Parks & Places UPDATE

JACKSDALE



Cllr David Martin with one of the new boards in Jacksdale

CROMFORD CANAL

New interpretation boards have been installed providing information on the walking routes and local industrial heritage of this historic area.

WHAT'S COMING UP...

Sudbury Drive:

The Council is to adopt Sudbury Drive play area in Huthwaite and has secured funding from the housing developer to upgrade the play equipment.

Consultation for the improvement will be commencing in early spring before finalising the plans and securing a contractor to undertake the improvements.

Selston Country Park:



Cllr Tom Hollis on the new climbing frame at Huthwaite Welfare Park

HUTHWAITE WELFARE PARK

A new play area has opened at the park following an investment of over £100k.

The completion of the first phase of work includes new climbing units, zip wire, inclusive swings, roundabout and seating. Improvements to the entrance from Sutton Road have also been completed.

Future phases of work will include the skate park and wider youth area, and the other park entrances.



Cllr Arnie Hankin and Cllr Andy Gascoyne at Selston Country Park

Funding has been secured for phase one improvement works at the park which will include new play facilities and access, footpath, and landscape improvements which will complement the reopening of the café.

Cllr Will Bostock and Paul Crawford, Ashfield District Council Place & Regeneration Manager at Healdswood Recreation Ground



Tree Planting

As part of our commitment to plant thousands of trees across the District, 1,000 more trees are being planted this year.

With the help of local school children and volunteers, the trees are being planted at six parks and green spaces across the District to create a healthier, greener, more pleasant place to live, work and visit.

The trees were donated as part of the Tree Appeal whose aim is to promote biodiversity, create habitats and improve the environment for people.

Trees are being planted at:

- 
- Beacon Drive
 - Morven Park
 - Pye Hill Road
 - Charnwood Street Recreation Ground
 - Healdswood Recreation Ground
 - Kenbrook Road Playing Field
 - Salterford Road Open Space
 - Washdyke Lane Recreation Ground/Wighay Park

New Council Homes

Following the completion of the first new Council properties last year, the development of more Council homes continues across the District.



New Council homes at Hawthorne Avenue, Hucknall

Approval has been given for the use of land on **Warwick Close, Kirkby** to be redeveloped for new council homes.

Subject to planning permission, the Council owned site would see circa 34 two-bedroom and three bedroom houses built on the site. The plot of land was previously home to flats which were demolished in 2010.

At **Hawthorne Avenue, Hucknall**, new tenants have moved into two new three bedroomed houses. The first new houses to be completed which offer thermal efficient, modern family living.

22 properties are due to be completed on **Froghopper Lane, Sutton** this spring, offering a range of family homes and apartments.

Fifteen properties are under construction across four derelict garage sites in Hucknall. Located at Chatsworth Drive, Barbara Square and Chestnut Grove.



Cllr Tom Hollis & Cllr Jason Zadrozny at The Poplars, Sutton

Two new Council homes have been completed at **The Poplars, Sutton**.

The two-bedroom bungalows have been built to a high eco standard, featuring extra insulation and thermal efficient windows. They also have wider doorways, reinforced joists and come with wet rooms allowing them to be adapted for all disabilities.



New homes on Froghopper Lane, Sutton

The Council is planning a further 20 properties in Sutton, before work begins on plans for new council homes across Kirkby.

Light Night DAZZLED

Light Night came to Sutton town centre on 11th & 12th February bringing art and culture to life in a light-tastic event.

Sutton dazzled like never before with residents experiencing local, national and international artists bringing the town centre to life.

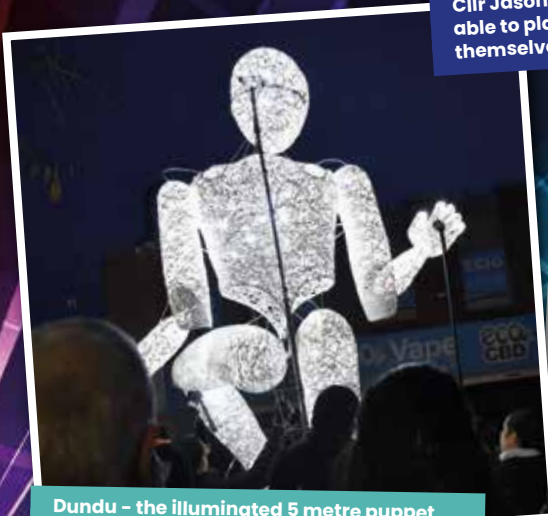
The free event, delivered in partnership with First Art was the first of its kind to be held in Ashfield and we would like to thank everyone that came out and supported the event.



The unbelievable Spark! took theatre to a whole new level with their magical music and light up drums.



Cllr Jason Zadrozny at The Nectary, where visitors were able to place their heads into giant flowers and immerse themselves in the sounds of pollinating insects.



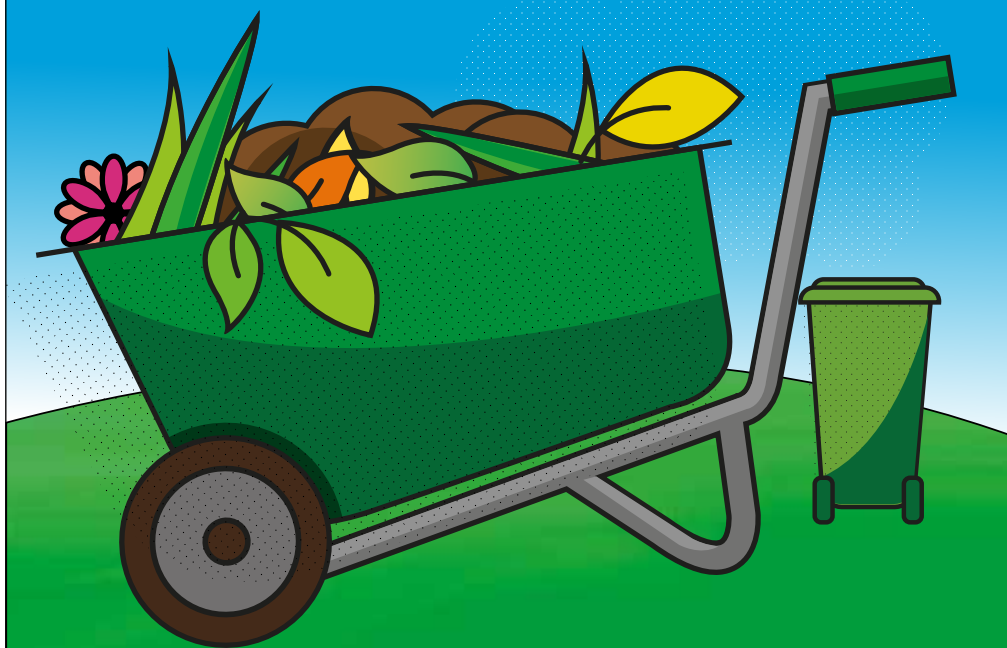
Dundu - the illuminated 5 metre puppet enthralled young and old alike as he walked through the town.



Attendees also came face to face with the Invisible Man, or did they? As part of his interactive walkabout residents saw experiments go wrong and secret powers unleashed.

DON'T MISS OUT ON CONTINUING YOUR GARDEN WASTE RECYCLING IN 2022!

Pay online or via Direct Debit.



Join over 20,000 residents that already have
their garden waste collected every two weeks



www.ashfield.gov.uk/gardenwaste

Useful Contact Details...



ADC Switchboard
t: 01623 450000

Private Sector Enforcement (Housing)
e: privatesectorenforcement@ashfield.gov.uk
t: 01623 457345

Councillor Information
e: democratic.services@ashfield.gov.uk
t: 01623 457232

Revenues
e: revenues@ashfield.gov.uk
t: 01623 457400

Duty Planner
e: dutyplanner@ashfield.gov.uk
t: 01623 457388

Housing Lettings
e: homefinder@ashfield.gov.uk
t: 01623 450000 (Option 1, Option 4)

Elections
e: regelec@ashfield.gov.uk
t: 01623 457321

Housing Repairs
e: adcrepairs@ashfield.gov.uk
t: 01623 457999

Environment and Waste
e: environment@ashfield.gov.uk
t: 0800 183 8484

Housing Tenancy
e: tenancy@ashfield.gov.uk
t: 01623 450000 (Option 1, Option 3)

Cemeteries
e: cemeteries@ashfield.gov.uk
t: 01623 457462

Housing Rents
e: income@ashfield.gov.uk
t: 01623 450000 (Option 1, Option 2)

Anti-Social Behaviour
e: asb@ashfield.gov.uk
t: 01623 450000

Homelessness Services
e: housingoptions@ashfield.gov.uk
t: 01623 457252

Lost/Stray Dogs
t: 01623 457345

Lifeline Services
e: lifeline@ashfield.gov.uk
t: 01623 608888 (option 5)

Follow us on social media!

www.ashfield.gov.uk

You can also keep up to date with all things Ashfield District Council on our social media channels.

Follow us for news updates, job adverts, events, competitions, meetings and more! Our direct messaging inbox is open for all your enquiries.



Ashfield District Council
@ADCashfield

